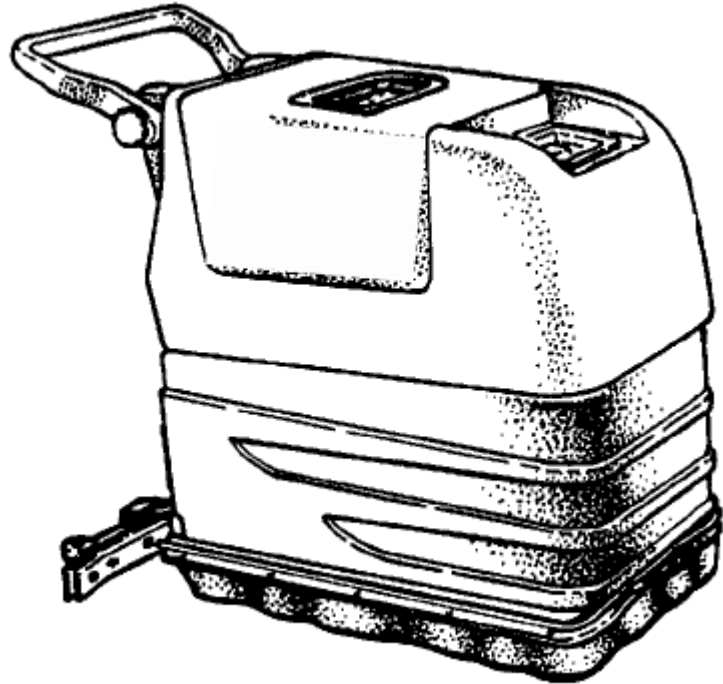


VISION 17B & 17BT

Model:
VISION 17 B
VISION 17 BT



Part List English

02-12-2014

Table of Contents

VISION 17B & 17BT

Accessories	3
Vision 17B	5
Vision 17BT	8
ASM. Non traverse axle 17B	11
ASM. Traverse axle 17BT	13
Brush lift	15
ASM. Main frame	17
Brush motor	20
Panel 17B	22
Panel 17BT	24
Squeegee	26
Solution tank	28
Recovery tank	30
Support tank 17B	32
Support tank 17BT	34
Brake kit 17BT	36
Vacuum motor	38
Gear box	40
Vision 17B/17BT	42
Traverse motor 17BT	44
Traverse motor 17B	46
Battery charger	48

Accessories

VISION 17B & 17BT

02-12-2014

Part List ID
VISION17B

3

Accessories:

<u>Part No.</u>	<u>Description</u>
51436B	Brush, Polypropylene
53126B	Pad Driver
50527A	Big Mouth Base
56927A	Big Mouth Retainer
50477A	Clutch Plate for Pad/Brush
962819	Clutch Plate Screws
51437B	Nylon Scrub Brush .028 Dia. Bristles
51439B	Grit Scrub Brush Assembly
682408	Hose Connector - connects 1½" diameter hose to machine
674114	10' x 1½" red spiral lock deluxe hose
639804	1½" double curved aluminum wand
638828	Aluminum 14" squeegee pick up tool
638856	Aluminum combination scrubbing brush & squeegee pick-up tool
51469B	Nylon Scrub Brush .016 Dia. Bristles
51481A	Grit-Lite Brush ◆
10773A	Kit, Parking Brake
14661B	Standard Battery Cable Kit
18800A	Squeegee Asm.

NOTE: ◆ indicates that a change has occurred since the last publication of this manual.

PADS BY CASE

<u>Color</u>	<u>Vision 17</u>	<u>Color</u>	<u>Vision 17</u>
Yellow	979169	Green	976157
White	976052	Brown	976055
Red	976053	Black	976158
Blue	976054		

Accessories

VISION 17B & 17BT

02-12-2014

Part List ID
VISION17B

4

Pos	Part no.	Qty	Description
1	51436B	1	BRUSH. POLY PLASTIC (VISI
2	53126B	1	DRIVER. PAD 17in (VISION 7E)
3	50527A	1	BASE. PAD RETAINER LEFT H
4	56927A	1	RETAINER. PAD . LEFT HAND
5	50477A	1	PLATE.CLUTCH C.C.W. 6.44
6	962819	1	SCR 1/4 -20 X 1& 1/4. PHI
7	51437B	1	BRUSH. 17in NYLON (VISION
8	51439B	1	BRUSH. 17in ABRASIVE TYNE
9	682408	1	HOSE-CONNECTOR 1 1/2in (T
10	674114	1	HOSE VACUUM (1.5in X 10')
11	639804	1	WAND ASSEMBLY. CURVED (1
12	638828	1	TOOL-SQUEEGEE 14in (1 1/2
13	638856	1	TOOL-COMBO. SQUEEGEE/BRUS
14	51469B	1	BRUSH. 17in NYLON .016 (V
15	51481A	1	BRUSH. 17in CLEAN GRIT (V
17	14661B	1	KIT. BATTERY CABLE (VISIO
18	18800A	1	SUB ASSEMBLY-SQUEEGE (170
31	10001936	1	PAD 17 432MM ECO WHITE 5 PCS
32	976053	1	CS 17 RED 51 PADS
33	10001939	1	PAD 17 432MM ECO BLUE 5 PCS
35	10001971	1	PAD 17 432MM ECO BROWN 5 PCS
36	10001938	1	PAD 17 432MM ECO BLACK 5 PCS

Vision 17B

VISION 17B & 17BT

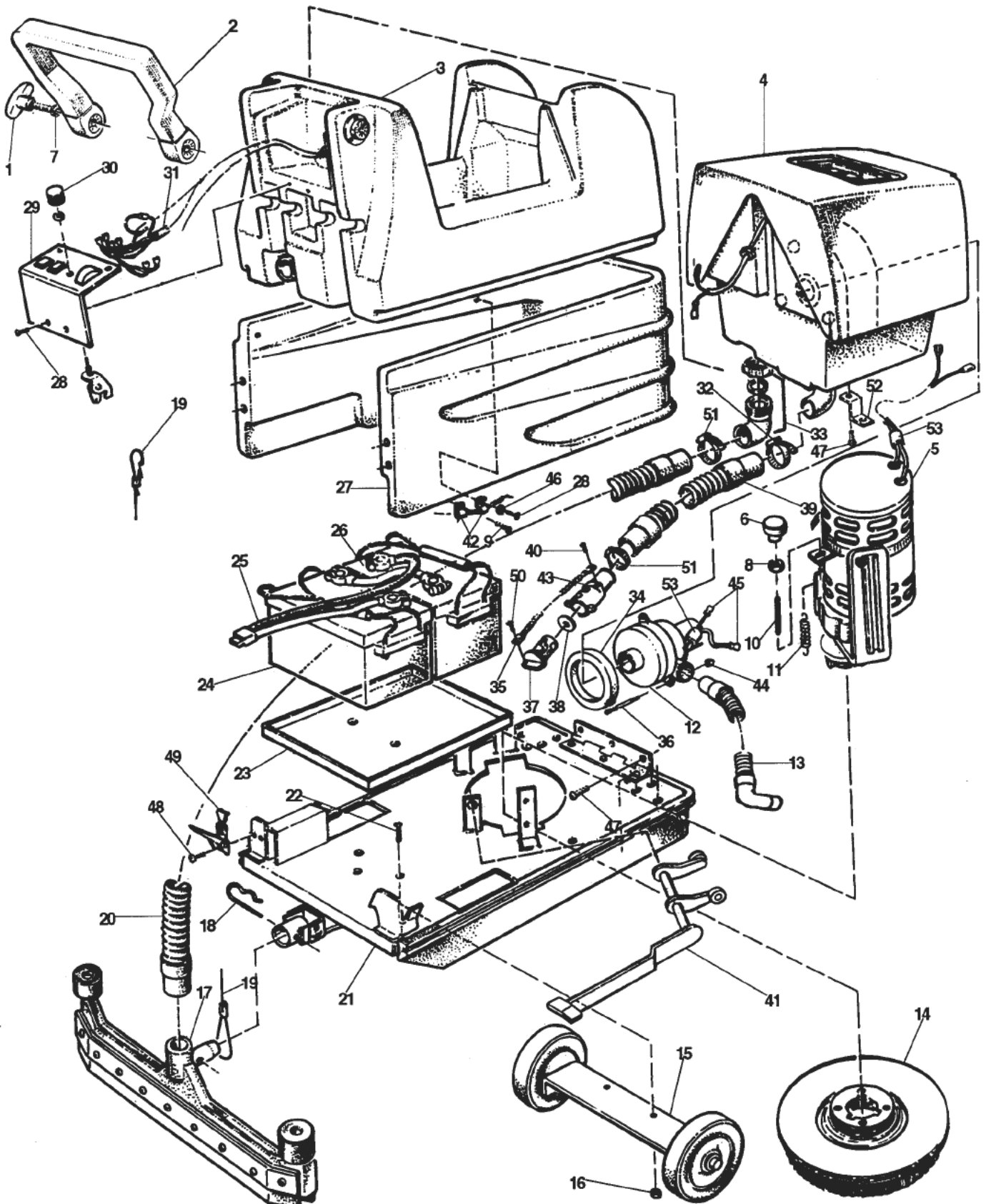
02-12-2014

Part List ID
VISION17B02

5

CLARKE TECHNOLOGY
Vision 17B

Machine #00380B, 24V Battery, Machine Assembly - 3/00



Vision 17B

VISION 17B & 17BT

02-12-2014

Part List ID
VISION17B02

6

Pos	Part no.	Qty	Description	
1	55531A	2	KNOB BAR STYLE 1/4-20 STU	
2	34804A	1	HANDLE. 1700B+E II&2000 B	
3		1	NOTE COMMENT	SEE "SOLUTION TANK"
4		1	NOTE COMMENT	SEE "RECOVERY TANK"
5		1	NOTE COMMENT	SEE "BRUSH MOTOR"
6	65300A	1	KNOB-ADJUSTMENT	
8	81111A	2	NUT HEX ELASTIC LOCK 3/8 - 16	
9	962981	1	SCR 10-00X 5/8 PN*ST TY	
10	68004A	1	STUD-PAD ADJUSTMENT	
11	818381	1	SPRING IDLER TEN TB16	
12	56412218	1	MOTOR VAC 24VDC	
13	30448A	1	VAC EXHAUST HOSE	
14		1	NOTE COMMENT	SEE"PAD DRIVER"
15		1	NOTE COMMENT	SEE "NON TRAVERSE"
16	920110	2	NUT.LK 5/16-18 REG(PLTD)	
17		1	NOTE COMMENT	SEE "SQUEEGEE"
18	66515A	1	PIN-LOCKING.SQUEEGEE	
19	61664A	1	SQUEEGEE LIFT CABLE (VISI ON17)	
20	30407B	1	HOSE. SQUEEGEE (17/20)	
21		1	NOTE COMMENT	SEE "MAINFRAME WELDMENT"
22	84238A	3	SCREW.5/16-18 X 3/4 FLAT	
23	39004A	1	TRAY BATTERY 1700	
24		2	NOTE COMMENT	SEE "BATTERY"
25		1	NOTE COMMENT	SEE "CABLE, BATTERY"
26		1	NOTE COMMENT	SEE "CABLE, BATTERY SERIES"
27		1	NOTE COMMENT	SEE "SUPPORT TANK"
28	84237A	6	SCREW.10-32 X 1/2 PAN HD	
29		1	NOTE COMMENT	SEE "CONTROL PAD"
30	55502A	1	SPEED CONTROL KNOB	
31	49728A	1	HARNESS WIRING VISION 17B RI	
32	752020	1	CLAMP 450 SHAMPOOER VAC	
33	53630A	1	ELBOW.RECOVERY ADAPTOR. 1	
34	643418	1	GASKET	
35	52206A	1	CHAIN. COVER AUTOSCRUBER	
36	58533A	3	SPACER.VAC MOTOR.3 STG. (
37	833901	1	HANDLE-DRAIN VALVE	
38	833407	1	GASKET-DRAIN	
39	30415A	1	HOSE. RECOVERY DRAIN (VIS	
40	962958	1	screw	
41		1	NOTE COMMENT	SEE "LIFT BRUSH"
42	832102	2	CLIP-CABLE	
43	839401	1	VALVE-DRAIN	
44	81104A	6	NUT. 1/4-20. ESNA TYPE SS	

Vision 17B

VISION 17B & 17BT

02-12-2014

Part List ID
VISION17B02

7

Pos	Part no.	Qty	Description
45	47905A	2	TERM. .25 FI MQC 14/16G
46	87026A	2	WASHER. .250. FLAT. SS
47	85395A	7	SCREW. 1/4-20 X 1/2 PAN HD
48	85509A	4	SCREW. 6-32 X 1/4 PAN HEA
49	755161	2	LATCH
50	962987	1	SCR 10-24X 3/8 PN*ST TY
51	832002	1	CLAMP-DRAIN VALVE
53	47202A	2	SUPPRESSOREMI FERRITE
NI	699202	6	TIE-WIRE 935A

VISION 17BT

VISION 17B & 17BT

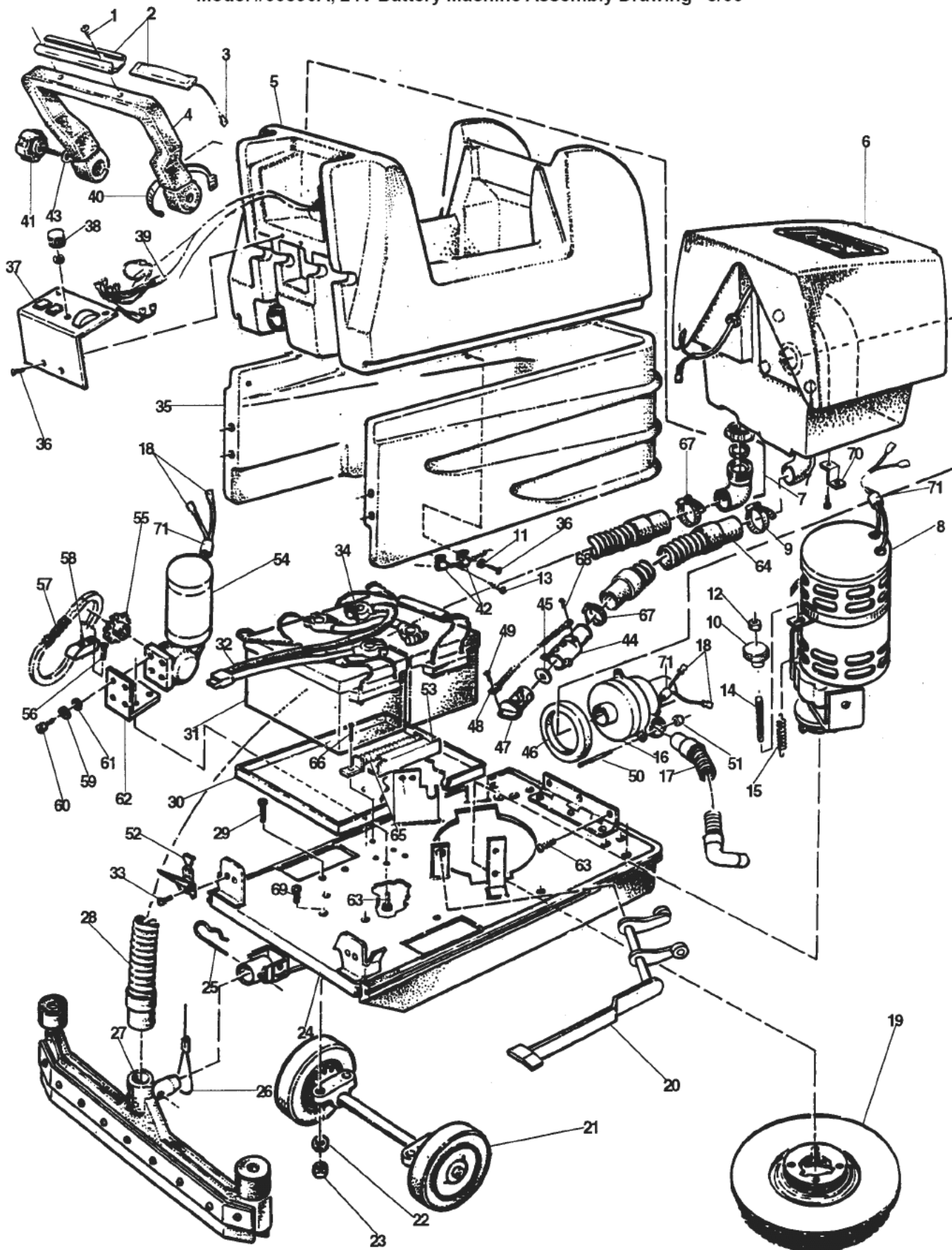
02-12-2014

Part List ID
VISION17B04

8

CLARKE TECHNOLOGY
Vision17 BT

Model #00390A, 24V Battery Machine Assembly Drawing - 3/00



Vision 17BT

VISION 17B & 17BT

02-12-2014

Part List ID
VISION17B04

9

Pos	Part no.	Qty	Description
1	962738	2	SCREW. 6-32 X 5/8 PAN HD.
2	47377A	1	SWITCH.W/CHANNEL.1700 BT
3	47708A	2	TERMINAL. MALE. QUICK DIS
4	34806A	1	HANDLE.W/TUBE.MACH&FORM.1
5		1	NOTE COMMENT SEE "SOLUTION TANK"
6		1	NOTE COMMENT SEE "RECOVERY TANK"
7	53630A	1	ELBOW.RECOVERY ADAPTOR. 1
8		1	NOTE COMMENT SEE "BRUSH MOTOR"
9	752020	1	CLAMP 450 SHAMPOOER VAC
10	65300A	1	KNOB-ADJUSTMENT
11	87026A	1	WASHER. .250. FLAT. SS
12	81111A	1	NUT HEX ELASTIC LOCK 3/8 - 16
13	962981	1	SCR 10-00X 5/8 PN*ST TY
14	68004A	1	STUD-PAD ADJUSTMENT
15	818381	1	SPRING IDLER TEN TB16
16	56412218	1	MOTOR VAC 24VDC
17	30448A	1	VAC EXHAUST HOSE
18	47905A	2	TERM. .25 FI MQC 14/16G
19		1	NOTE COMMENT SEE "BRUSH OR PAD DRIVER"
20		1	NOTE COMMENT SEE "BRUSH LIFT"
21		1	NOTE COMMENT SEE "TRAVERSE AXLE"
22	87027A	4	WASHER.2000 PV
23	920110	4	NUT.LK 5/16-18 REG(PLTD)
24		1	NOTE COMMENT SEE "MAIN FRAME"
25	66515A	1	PIN-LOCKING.SQUEEGEE
26	61664A	1	SQUEEGEE LIFT CABLE (VISI ON17)
27		1	NOTE COMMENT SEE "SQUEEGEE"
28	30407B	1	HOSE. SQUEEGEE (17/20)
29	84239A	4	SCREW.5/16-18 X 1 FLAT HD
30	39004A	1	TRAY BATTERY 1700
31		2	NOTE COMMENT SEE "BATTERY"
32		1	NOTE COMMENT SEE "CABLE, BATTERY"
33	85509A	4	SCREW. 6-32 X 1/4 PAN HEA
34		1	NOTE COMMENT SEE "CABLE, BATTERY SERIES"
35		1	NOTE COMMENT SEE "ASM, TANK SUPPORT"
36	84237A	6	SCREW.10-32 X 1/2 PAN HD
37		1	NOTE COMMENT SEE "ASM, CONTROL PANEL"
38	55502A	1	SPEED CONTROL KNOB
40	58901A	2	TIE-WIRE
41	55531A	2	KNOB BAR STYLE 1/4-20 STU
42	832102	2	CLIP-CABLE
43	980413	4	WASHER RET VAC
44	839401	1	VALVE-DRAIN

Vision 17BT

VISION 17B & 17BT

02-12-2014

Part List ID
VISION17B04

10

Pos	Part no.	Qty	Description
45	833407	1	GASKET-DRAIN
46	643418	1	GASKET
47	833901	1	HANDLE-DRAIN VALVE
48	52206A	1	CHAIN. COVER AUTOSCRUBER
49	962987	1	SCR 10-24X 3/8 PN*ST TY
50	58533A	1	SPACER.VAC MOTOR.3 STG. (
51	81104A	6	NUT. 1/4-20. ESNA TYPE SS
52	755161	2	LATCH
54	45031C	1	MOTOR.TRAVERSE.24V (VIS 1
55	58707A	1	SPROCKET.16 T.1700 BT II
56	84233A	2	SCR 1/4 -20X 3/4 FT*SY
57	52208A	1	CHAIN.DRIVE NICKLE PLATED
58	37014A	1	PAD.CHAIN TENSION.1700 BT
59	980657	4	WASHER.LK 1/4 STD
60	85391A	4	SCR 1/4 -20X 5/8 PN*SY
61	980646	4	WASHER. 1/4 SAE FLAT PLTD
63	85395A	9	SCREW.1/4-20 X 1/2 PAN HD
64	30415A	1	HOSE. RECOVERY DRAIN (VIS
65	46506A	1	RESISTOR.8 OHM 1700 BT II
66	85519A	2	SCR 1/4 -20X 3/8 PN*SY
67	832002	2	CLAMP-DRAIN VALVE
68	962958	1	screw
69	84238A	1	SCREW.5/16-18 X 3/4 FLAT
70	61244A	2	BRKT..TANK.(PAINTED) 1700
71	47202A	3	SUPPRESSOREMI FERRITE
NI	699202	6	TIE-WIRE 935A

ASM. Non traverse axle 17B

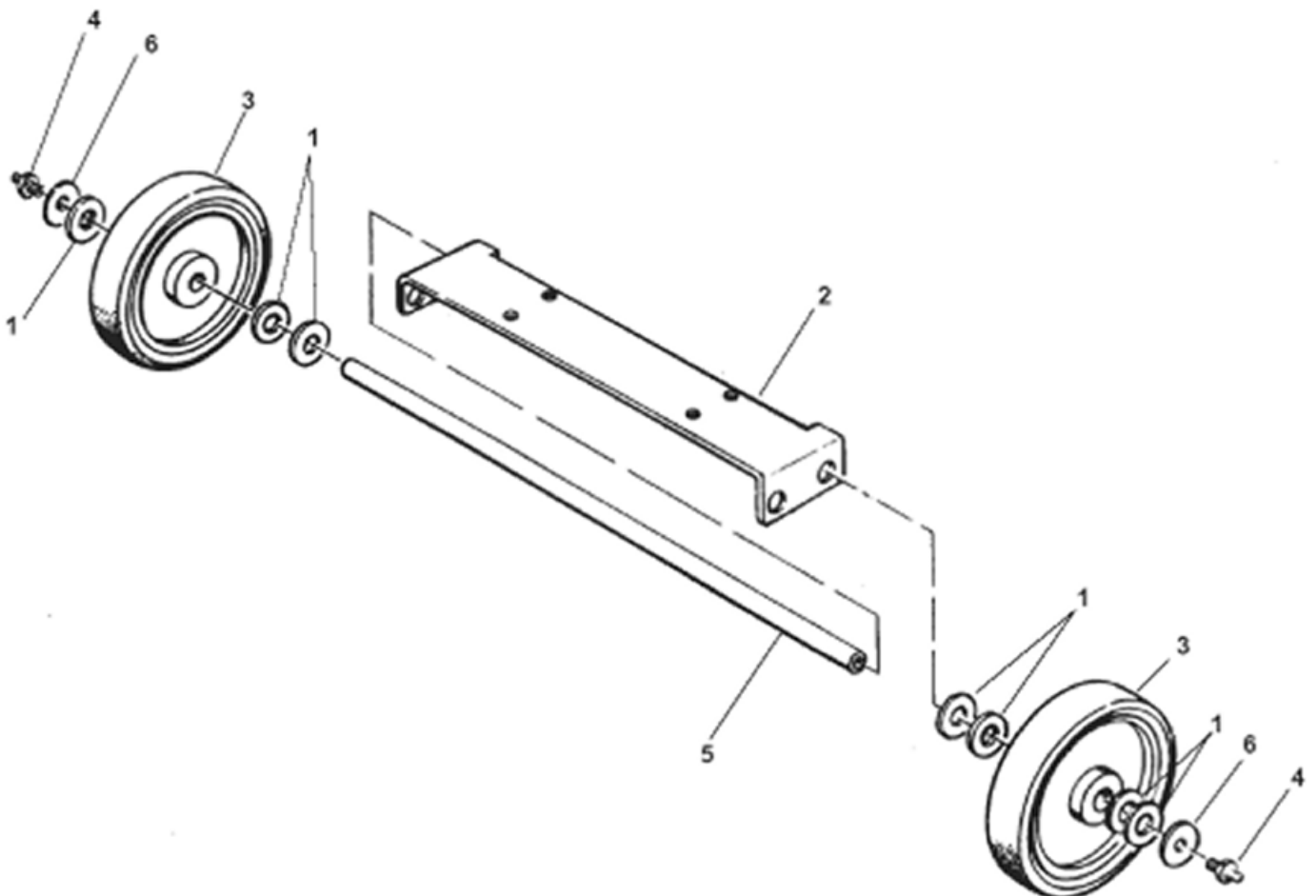
VISION 17B & 17BT

02-12-2014

Part List ID
VISION17B06

11

CLARKE TECHNOLOGY
Vision 17B
ASM, Non Traverse Axle
Drawing & Parts List 11/98
Form#10510A



ASM. Non traverse axle 17B

VISION 17B & 17BT

02-12-2014

Part List ID
VISION17B06

12

Pos	Part no.	Qty	Description
1	87613A	7	WASHER.NYLON.2000BT II NOMINAL, SEE POS.98,99
2	61247A	1	BRACKET. SHAFT (1700B+E I
3	59936C	2	WHEEL.6inODX1 1/4X5/8(W/B
4	54014A	2	FITTING. GREASE. 1/4in-28
5	60196A	1	AXLE.WHEEL (VISION 20)
6	87039A	2	WASHER. FENDER 1/4in S.S.

NOTE: Place washers as required to center the wheels
(Number of washers may vary)

ASM. Traverse axle 17BT

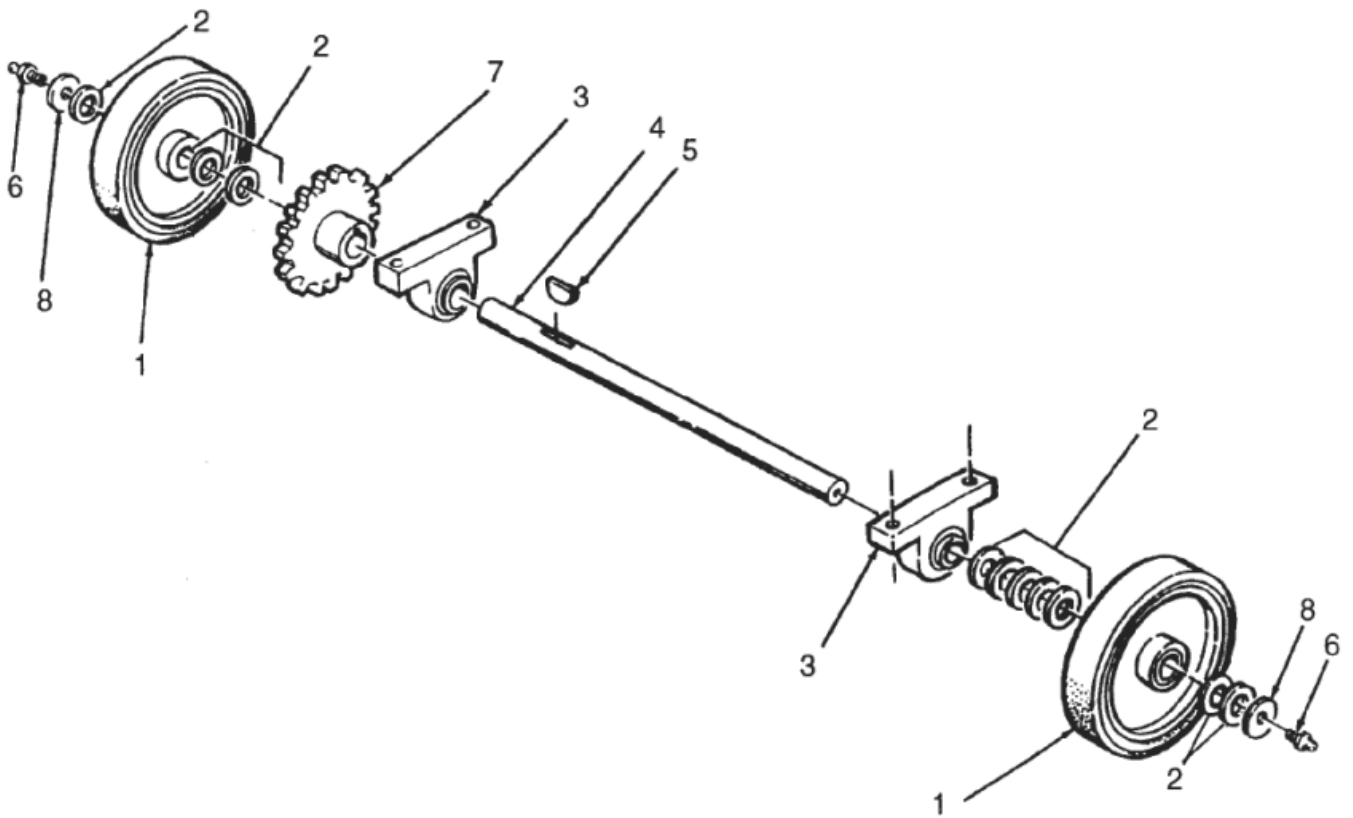
VISION 17B & 17BT

02-12-2014

Part List ID
VISION17B08

13

CLARKETECHNOLOGY
Vision 17BT
ASM, Traverse Axle
Drawing & Parts List 11/98
Form#10512A



ASM. Traverse axle 17BT

VISION 17B & 17BT

02-12-2014

Part List ID
VISION17B08

14

Pos	Part no.	Qty	Description	
0	51187A	2	BEARING. ROLLER CLUTCH 5/	
0	58146A	2	SEAL. SINGLE LIP 5/8 SHAF	REPAIR PARTS FOR 59935B WHEEL
0	58154A	2	SEAL.DOUBLE LIP 5/8 SHAFT	REPAIR PARTS FOR 59935C WHEEL
1	59935C	2	WHEEL.6inO.D. W/CLUTCH/GR	SEE POS.98,99
2	87613A	10	WASHER.NYLON.2000BT II	
3	51175A	2	BEARING.PILLOW BLOCK.1700	
4	60503A	1	AXLE. TRAVERSE (VISION 17	
5	80504A	1	KEY . 3/16 X 5/8 WDRUF# 60	
6	54014A	2	FITTING. GREASE. 1/4in-28	
7	58711A	1	SPROCKET. 32 T. (1700 BT	
8	87039A	2	WASHER. FENDER 1/4in S.S.	

NOTE: Place washers as required to center the wheels
(Number of washers may vary)

Brush lift

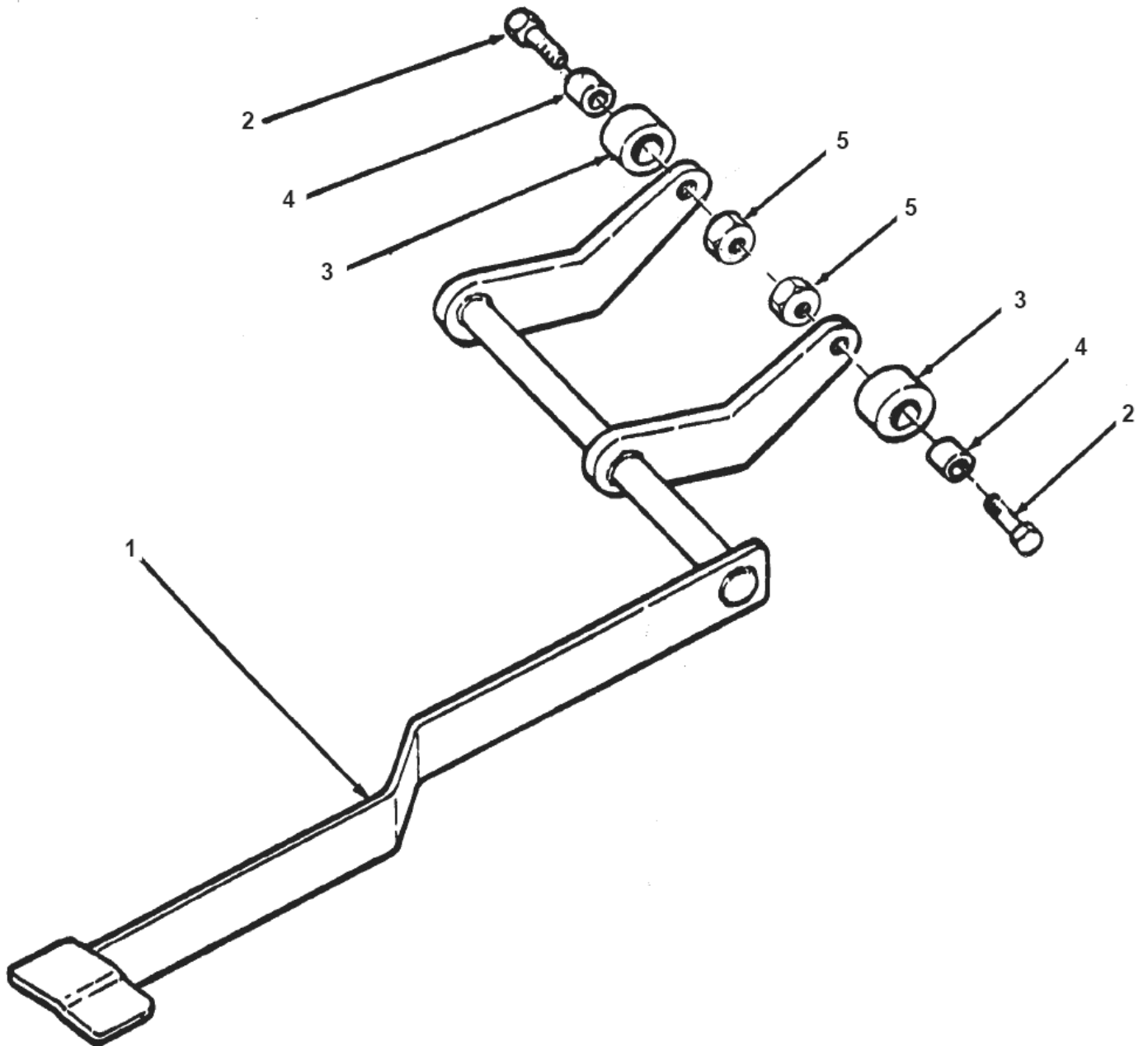
VISION 17B & 17BT

02-12-2014

Part List ID
VISION17B10

15

CLARKE TECHNOLOGY
Vision 17B/BT
Brush Lift Drawing Assembly & Parts List 11/98
Form#16608A



Brush lift

VISION 17B & 17BT

02-12-2014

Part List ID
VISION17B10

16

Pos	Part no.	Qty	Description
1	65424A	1	LIFT . BRUSH. WLDMT 1700
2	85600A	2	SCREW 1/4-20 X 3/4 PAN HE AD
3	51516A	2	BUSHING.TOP. 2000 PV
4	608210	2	SPACER-HANDLE BOLT
5	920208	2	NUT.HEX 1/4-20(PLTD)

ASM. Main frame

VISION 17B & 17BT

02-12-2014

Part List ID
VISION17B12

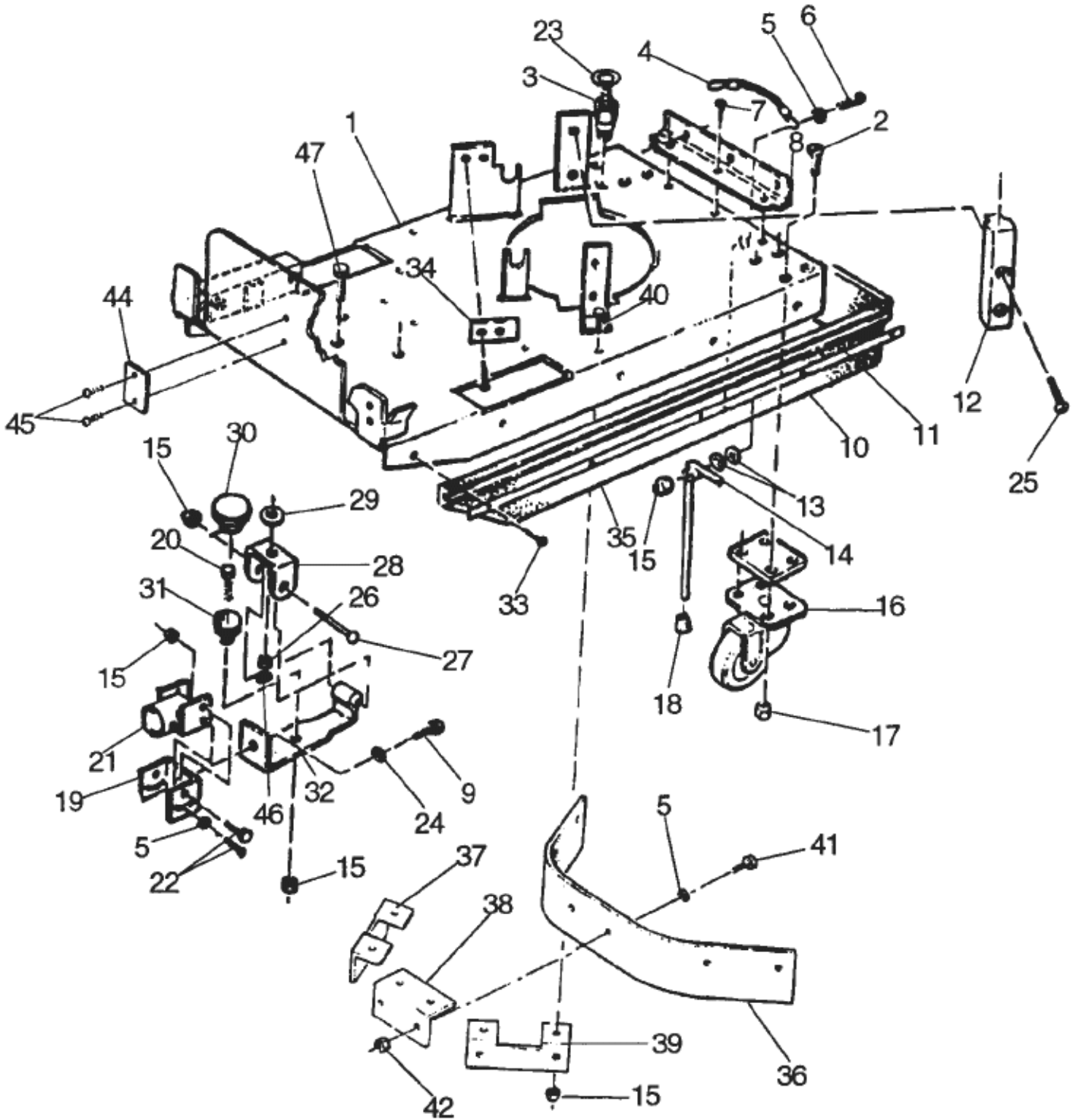
17

CLARKTECHNOLOGY

Vision 17B/BT

ASM, Main Frame Drawing & Parts List - 11/98

Form #16926B



ASM. Main frame

VISION 17B & 17BT

02-12-2014

Part List ID
VISION17B12

18

Pos	Part no.	Qty	Description
1	60021A	1	FRAME WLDMPNTD VIS 17B BT
2	84239A	6	SCREW.5/16-18 X 1 FLAT HD
3	53618A	1	ADAPTOR. 3/8 X 3/8 NPT NY
4	64456A	1	HANDLE.LIFT. 1700B+E II
5	87026A	15	WASHER. .250. FLAT. SS
6	85384A	2	SCR 1/4 -20 X 1&1/2 PN*S
7	85395A	7	SCREW.1/4-20 X 1/2 PAN HD
8	64505A	1	HINGE TANK PIVOT
9	85822A	1	SCREW. 3/8-16 X 7/8 HX CA
10	31227A	1	SKIRT. MAINFRAME.(VISION
11	66960A	2	RETAINER. SKIRT.PNTD (VIS
12	38009A	3	SLIDE.MOTOR LIFT. 1700
13	980442	2	WASHER WAVE
14	68733B	1	KICK STAND(VISION 17 B+E)
15	81104A	12	NUT. 1/4-20. ESNA TYPE SS
16	52117A	2	CASTER.FRONT. 1700
17	920110	6	NUT.LK 5/16-18 REG(PLTD)
18	52047A	1	CAP.STAND BLACK 1700B+E
19	69028A	1	SWIVEL. SQUEEGEE (VISION
20	85391A	1	SCR 1/4 -20X 5/8 PN*SY
21	60698A	1	BRACKET. SQUEEGEE (VISION
22	170915	4	SCREW.1/4-20 X 3/4 HX HD(SS)
23	722021	1	CLAMP.HOSE #4
24	87614A	2	WASHER. LOCK. INTERNAL-EX
25	84233A	6	SCR 1/4 -20X 3/4 FT*SY
26	67867A	1	SPACER.SQUEEGEE SWIVEL. 1
27	85396A	1	SCREW.1/4-20 X 2 PAN HD S
28	61252A	1	BRACKET. SQUEEGEE SWIVEL
29	87027A	1	WASHER.2000 PV
30	30517A	1	BUSHING.SQUEEGEE. 1700B+E
31	58612A	1	SPRING-COMPRESSION EXT-77
32	68730B	1	ARM. WLDMT.. SQUEEGEE (PL
33	85397A	12	SCREW.10-24 X 3/8 PAN HD
34	66939A	1	RETAINERMOTOR PIVOT 1700
35	66961A	2	RETAINER REAR SKIRT
36	33504A	1	CENTRE FLAP (VIS 17B/BT)
37	69470A	1	BRACKET FLAP LEFT PNTD 17B/BT
38	69469A	1	BRACKET CENTER FLAP VIS17B/BT
39	69468A	1	BRACKET RIGHT FLAP PAINTED
40	962098	6	SCR 1/4 -20X 3/4 FL*ST
41	962798	11	SCR 10-24X 1/2 PN*SS
42	81110A	11	NUT.HEX.ELASTIC LOCK.10-2
43	170854	1	NUT HEX 5/16 18 PLTD

ASM. Main frame

VISION 17B & 17BT

02-12-2014

Part List ID
VISION17B12

19

Pos	Part no.	Qty	Description
45	85509A	2	SCREW. 6-32 X 1/4 PAN HEA
46	81112A	1	NUT.5/16-18 THIN ESNA
47	84229A	1	SCREW .31-18X.88 FT SS PH.REC.

Brush motor

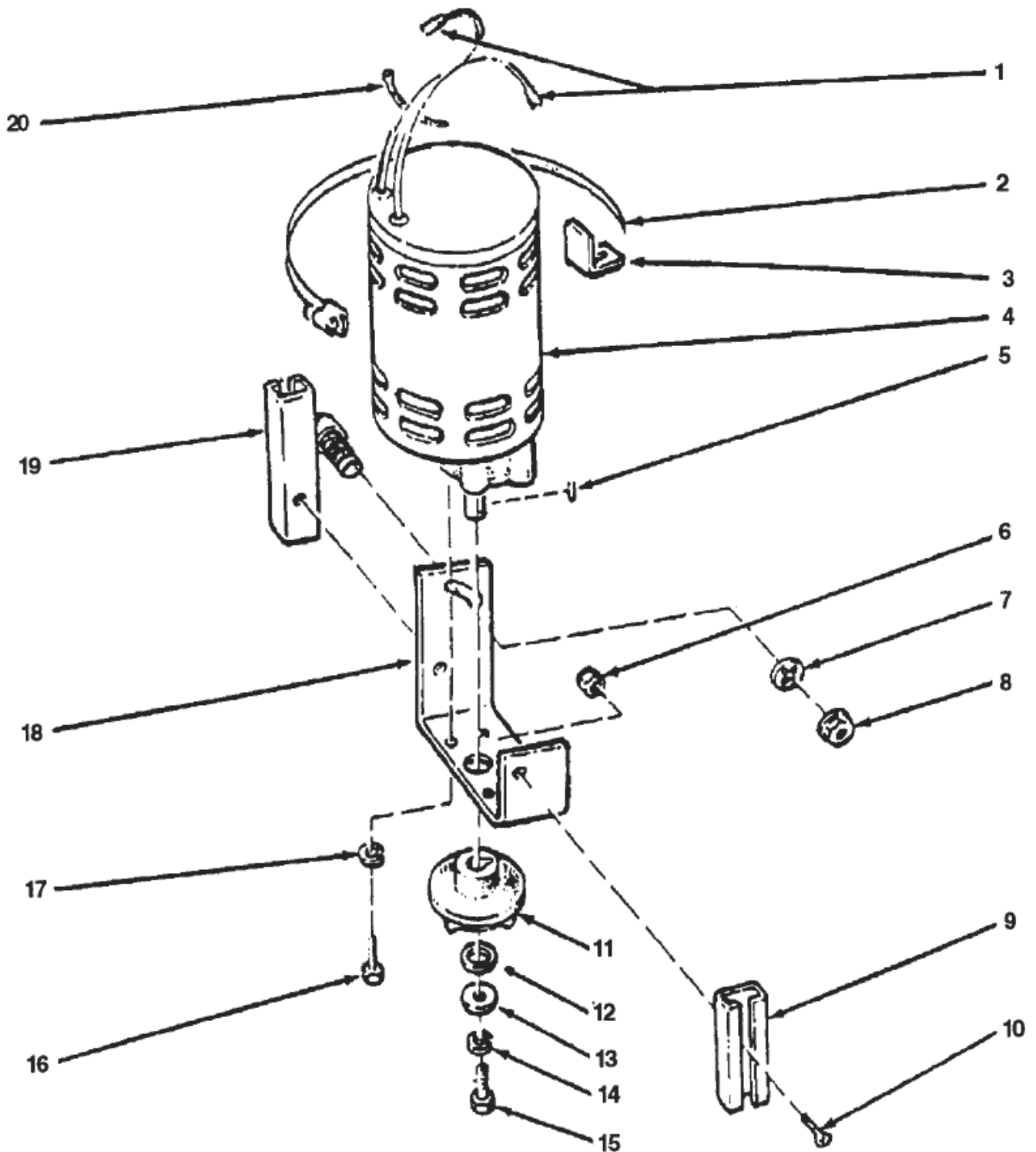
VISION 17B & 17BT

02-12-2014

Part List ID
VISION17B14

20

CLARKTECHNOLOGY Vision 17B/BT Brush Motor Assembly Drawing and Parts List 3/00 Form#17116A



Brush motor

VISION 17B & 17BT

02-12-2014

Part List ID
VISION17B14

21

Pos	Part no.	Qty	Description
1	47710A	2	TERMINAL1/4 FIMQD 12-10 GA
2	762005	1	CLAMP
3	60670B	1	BRACKET. BRUSH ADJ.1700
4	44809b	1	GEARMOTOR, 200 RPM,24V, 1
5	80501A	1	KEY. MTR SHAFT-3/16SQ X 1 1/4L
6	81104A	2	NUT. 1/4-20. ESNA TYPE SS
7	980662	1	WASHER-SH #1224-00 LOCK
8	67865A	1	SPACER.HANDLE LOCK.1700B+
9	63600A	1	GUIDE. R.H.. 1700
10	84242A	2	SCR 1/4-20 X 5/8 FT HD 10 0 DEG
11	20308A	1	ADAPTOR. MOTOR (1700 VDE)
12	980679	1	WASHER. 3/4 SAE FLAT PLTD
13	980210	1	WASHER - IMPELLER
14	980652	1	WASHER.LK 5/16 REG(PLTD)
15	85727A	1	SCR 3/8 - 16 X 1 HEX HEAD
16	85389A	4	SCR 3/8 -16X 5/8 PN*SY
17	980638	4	LOCKWASHER 3/8 LT SPRING
18	61238A	4	BRACKET.MOTOR. 1700 (PLAT
19	68761A	1	GUIDE WLDMT.. VISION 17/2
20	58901A	2	TIE-WIRE

Panel 17B

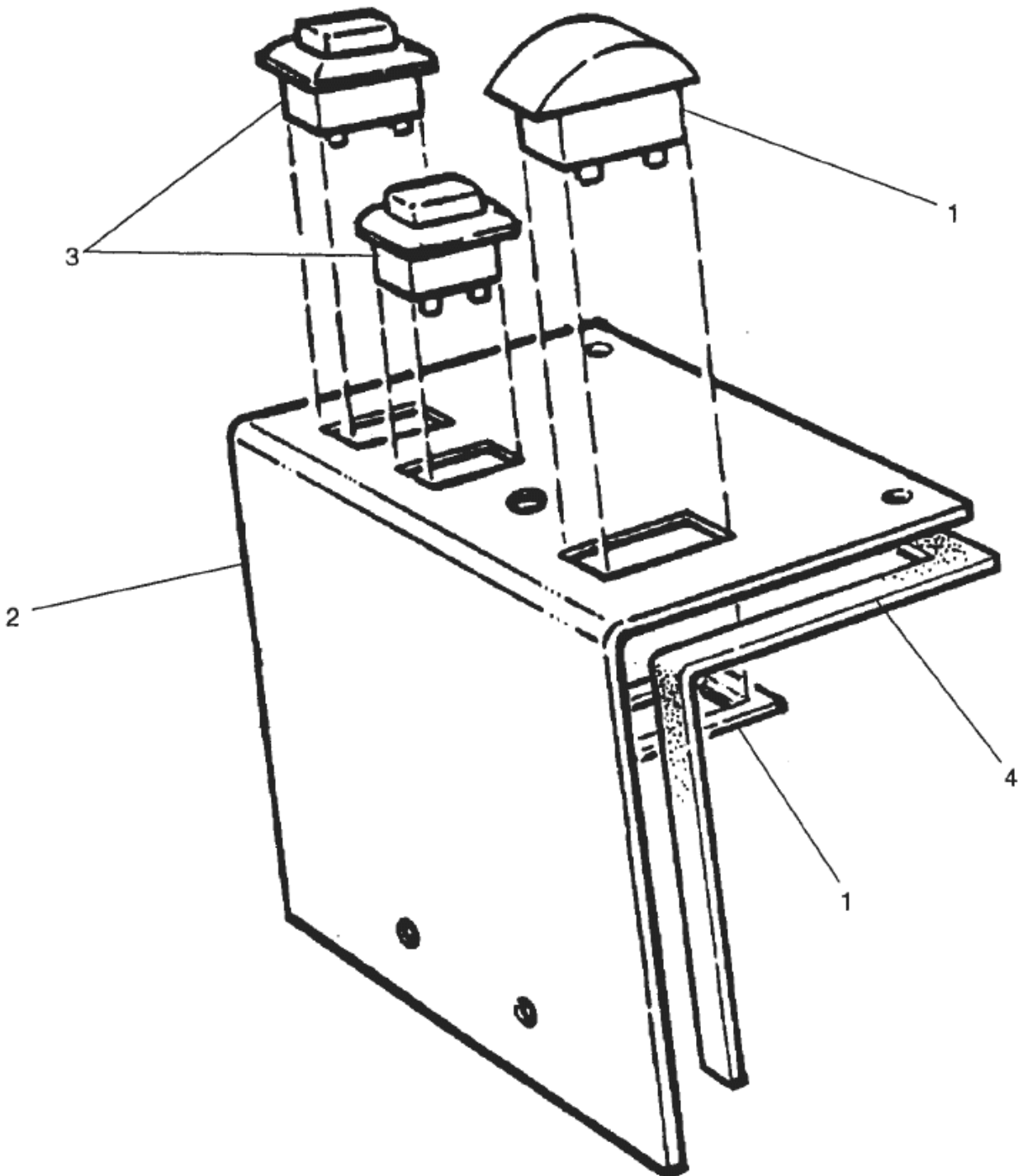
VISION 17B & 17BT

02-12-2014

Part List ID
VISION17B16

22

CLARKE TECHNOLOGY
Vision17B
Panel Assembly Non-Traverse Model
Drawing & Parts List 11/98
Form # 17641A



Panel 17B

VISION 17B & 17BT

02-12-2014

Part List ID
VISION17B16

23

Pos	Part no.	Qty	Description
1	44405B	1	METER INDICATOR BATTERY
2	66179A	1	PANEL CONTROL VIS 17/20
3	47316B	2	SWITCH-ROCKER.DPST
4	54349A	1	GASKET PANEL 2000 ET

Panel 17BT

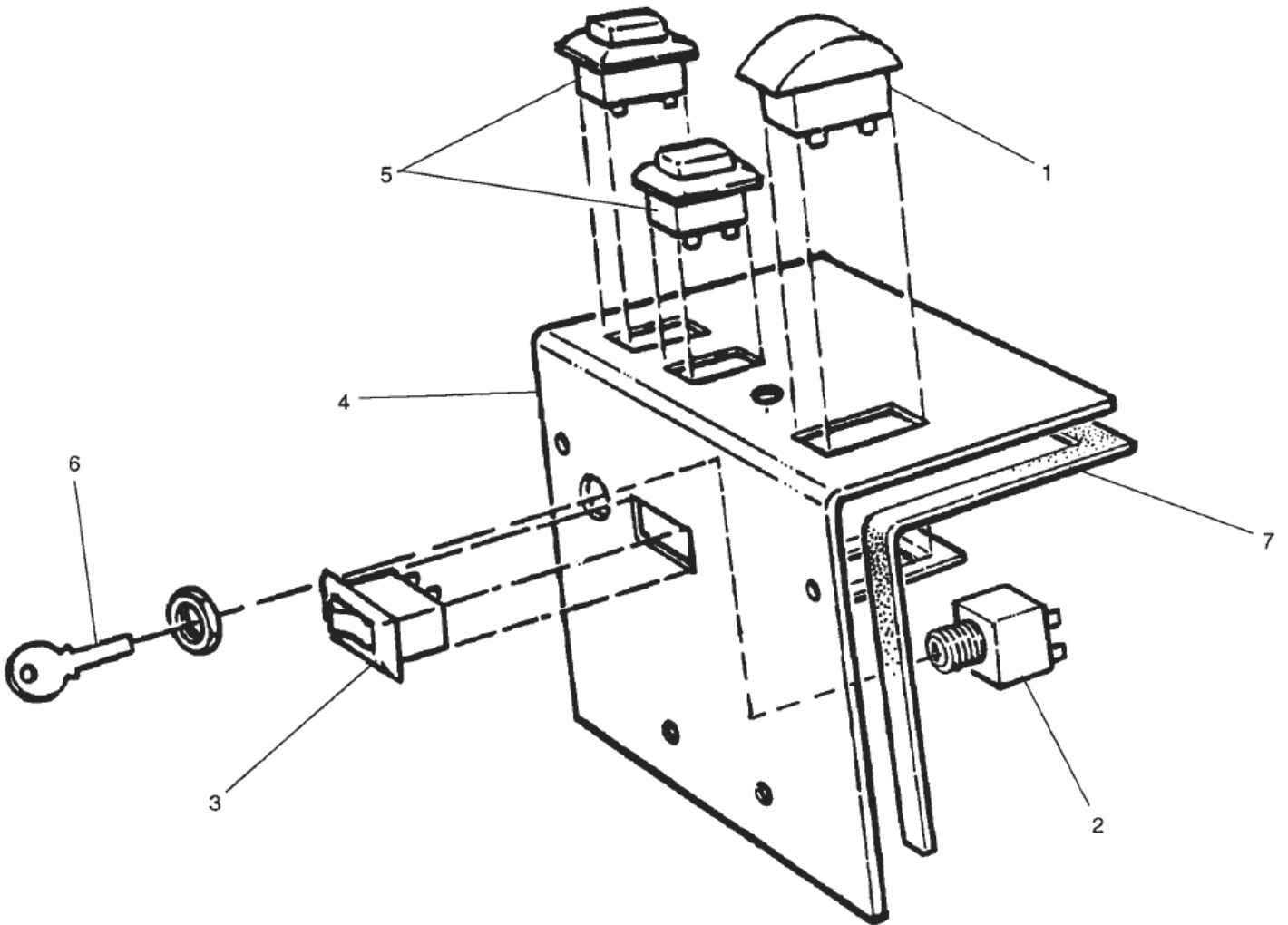
VISION 17B & 17BT

02-12-2014

Part List ID
VISION17B18

24

CLARKE TECHNOLOGY
Vision 17BT
Panel Assembly - Battery Traverse Model
Drawing and Parts List 11/98
Form #17640A



Panel 17BT

VISION 17B & 17BT

02-12-2014

Part List ID
VISION17B18

25

Pos	Part no.	Qty	Description
1	44405B	1	METER INDICATOR BATTERY
2	47380A	1	SWITCH.KEY. 32DLX/STD
3	47383A	1	SWITCH.3 POSITION.ROCKER(
4	69806A	1	PANEL CONTROL VISION 17BT
5	47316B	2	SWITCH-ROCKER.DPST
6	55413A	1	KEY (26/32 VISION)FOR 473
7	54349A	1	GASKET PANEL 2000 ET

Squeegee

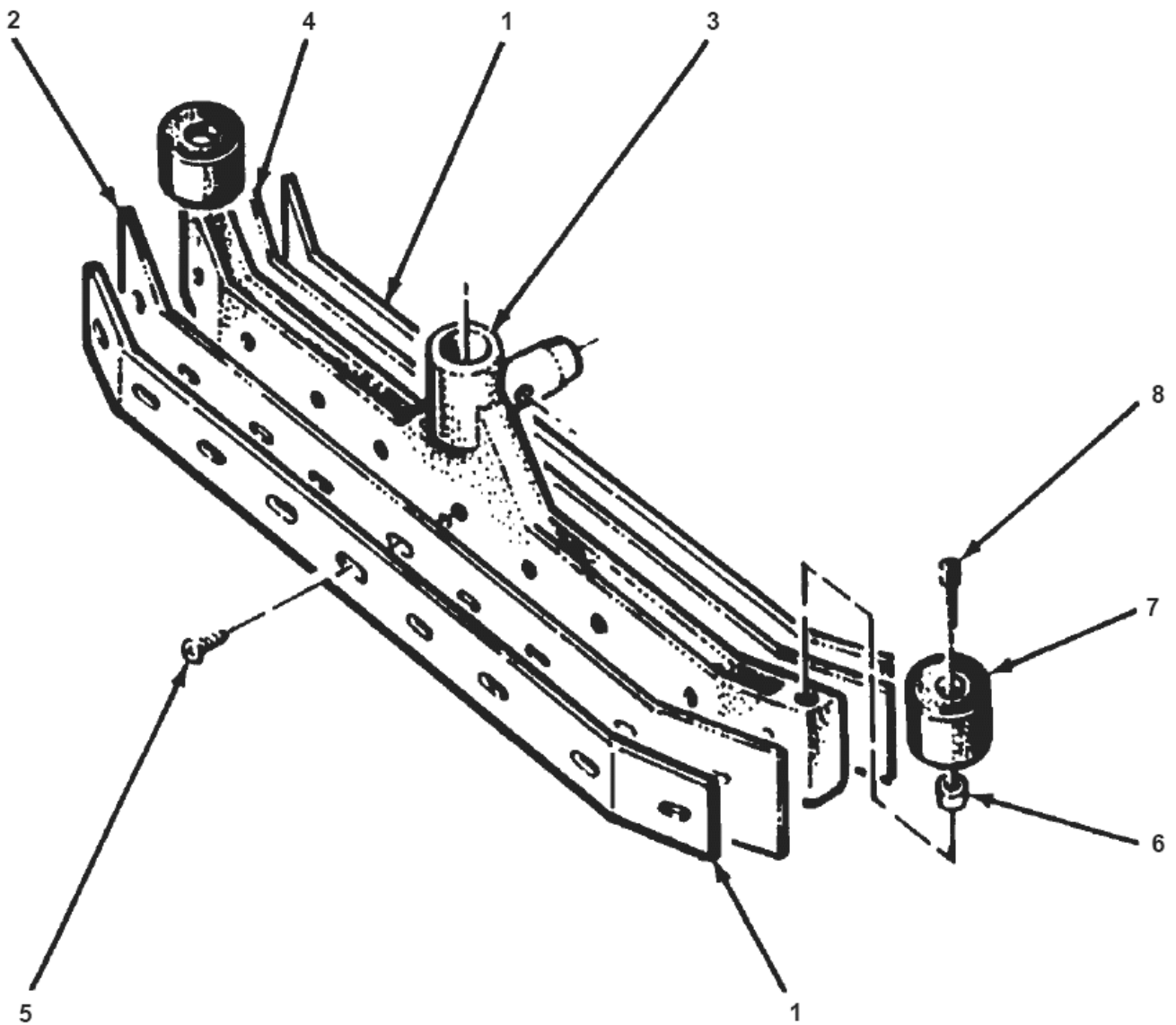
VISION 17B & 17BT

02-12-2014

Part List ID
VISION17B20

26

CLARKTECHNOLOGY
Vision 17B/BT
Squeegee Assembly Drawing & Parts List 11/98
Form#18809A



Squeegee

VISION 17B & 17BT

02-12-2014

Part List ID
VISION17B20

27

Pos	Part no.	Qty	Description
1	66921B	2	RETAINER.SQUEEGEE S.S. LE
2	30902A	2	BLADE. SQ. REAR. GUM RUBB
3	27703A	1	CASTING. SQUEEGEE (2000 B
4	30903A	1	BLADE. SQ. FRONT. GUM
5	85398A	18	SCREW 1/4-20 X 1/2 PAN HD
6	838201	2	SPACER-WHEEL BR. GUIDE
7	839702	2	WHEEL-BRUSH GUIDE
8	962841	2	SCR 5/16-18X1&1/4 SC ST
20	30918A	1	BLADE. SQ. FRONT. NYTRO/E
21	30919A	1	BLADE. SQ. REAR. NITRO/EP

Solution tank

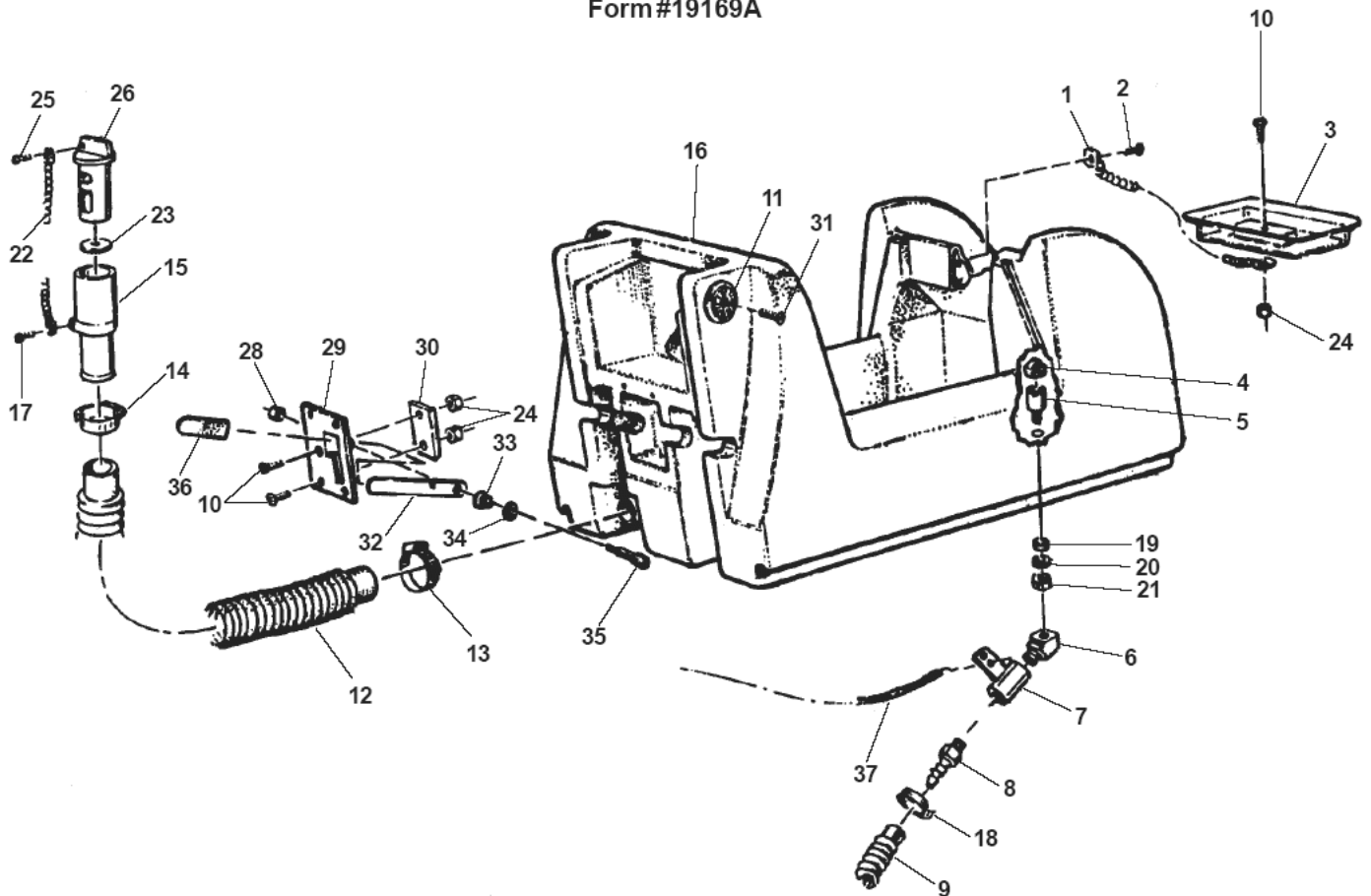
VISION 17B & 17BT

02-12-2014

Part List ID
VISION17B22

28

CLARKETECHNOLOGY
Vision 17B/BT
Solution Tank Assembly
Drawing & Parts List 6/01
Form#19169A



Solution tank

VISION 17B & 17BT

02-12-2014

Part List ID
VISION17BZZ

29

Pos	Part no.	Qty	Description
1	692409	1	CHAIN-COVER 925A
2	85519A	1	SCR 1/4 -20X 3/8 PN*SY
3	832322	1	COVER-SOL TANK
4	878535	1	STRAINER-SOL LINE
5	60317A	1	ADAPTOR.FILTER.2000 II
6	53614A	1	ELBOW-3/8X45 BRASS STREET
7	849401	1	VALVE-SOLUTION
8	53618A	1	ADAPTOR. 3/8 X 3/8 NPT NY
9	35138A	1	HOSE-SOLN TANK
10	962798	1	SCR 10-24X 1/2 PN*SS
11	36101A	2	RATCHET.HANDLE. 1700
12	30416A	1	HOSE. SOLUTION DRAIN (VIS
13	752020	1	CLAMP 450 SHAMPOOER VAC
14	832002	1	CLAMP-DRAIN VALVE
15	839401	1	VALVE-DRAIN
16	38964B	1	TANK SOLUTION VISION 17
17	962958	1	screw
18	722021	1	CLAMP.HOSE #4
19	833401	1	GASKET-DRAIN
20	980630	1	WASH-3/4 ID PLAIN ST
21	920264	1	NUT-3/4-16X3/8 HEX JAM
22	52206A	1	CHAIN. COVER AUTOSCRUBER
23	833407	1	GASKET-DRAIN
24	81110A	3	NUT.HEX.ELASTIC LOCK.10-2
25	962987	1	SCR 10-24X 3/8 PN*ST TY
26	833901	1	HANDLE-DRAIN VALVE
27	84237A	2	SCREW.10-32 X 1/2 PAN HD
28	81217A	1	NUT. 1/4-20 X .218H NYLOC
30	68646A	1	PLATE WEAR VISION 20
31	84236B	6	SCREW 10-32 X 1/2 FLAT HD SS
32	64476A	1	HANDLE. SQUEEGEE LIFT.(VI
33	53030A	1	SPRING. TAPER.(VISION 20)
34	980651	1	WASHER. 5/16 SAE FLAT
35	80031A	1	BOLT SHOULDER 5/16 X 5/8
36	52755A	1	COVER. HANDLE (EXT2100)
37	52503A	1	CABLE. SOLUTION (1700B/E

Recovery tank

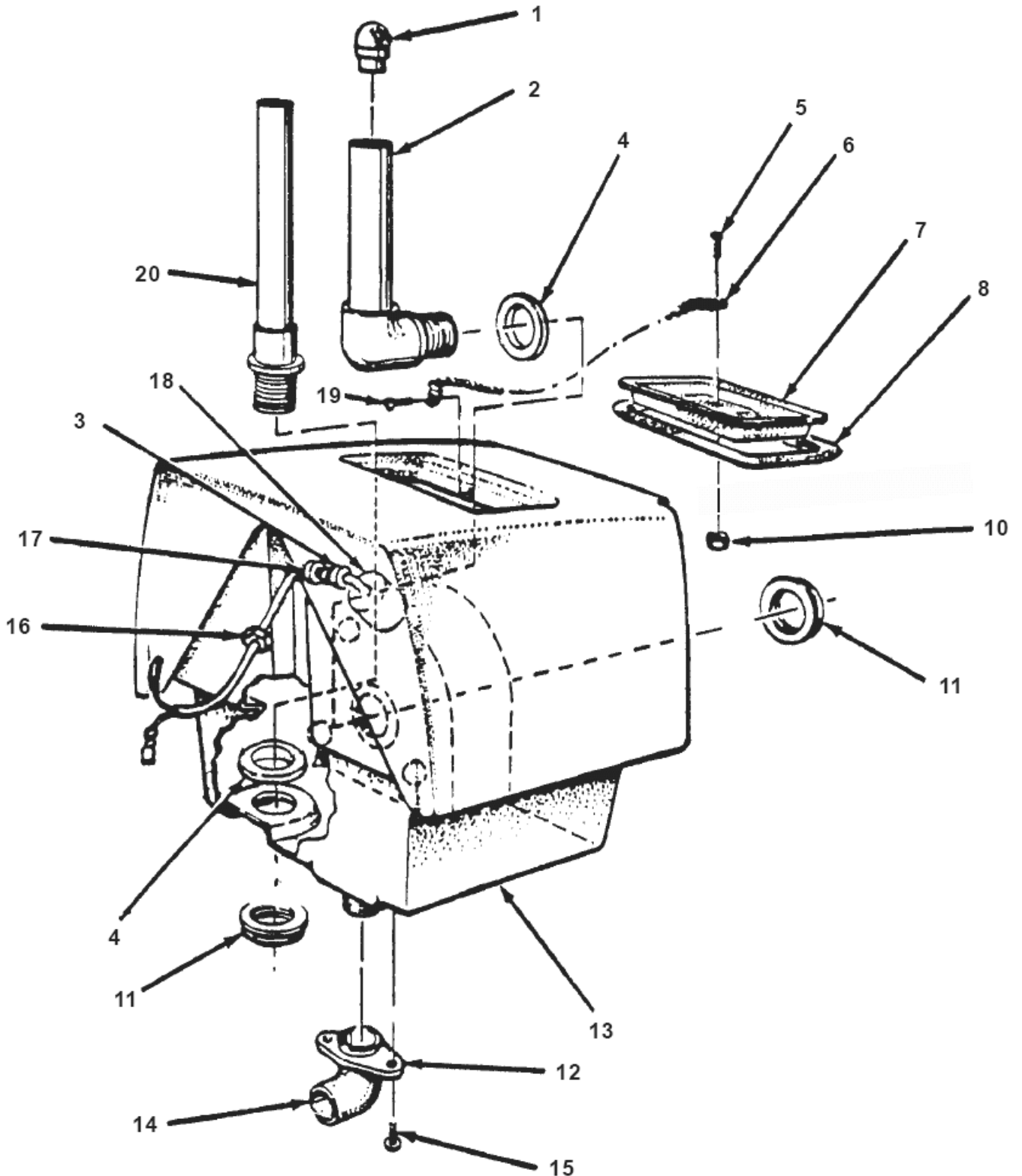
VISION 17B & 17BT

02-12-2014

Part List ID
VISION17B24

30

CLARKETECHNOLOGY Vision 17B/BT Recovery Tank Assembly Drawing & Parts List 6/01 Form #19170A



Recovery tank

VISION 17B & 17BT

02-12-2014

Part List ID
VISION17B24

31

Pos	Part no.	Qty	Description
1	58012A	1	STRAINER-REC.TANK 771-SER
2	59320B	1	RECOVERY TANK TUBE STAND(17/20
3	56459A	1	STRAIN RELIEF EXT-771 PBI
4	837304	2	O'RING. RETAINER. PAPER B
5	962798	1	SCR 10-24X 1/2 PN*SS
6	692409	1	CHAIN-COVER 925A
7	832322	1	COVER-SOL TANK
8	34256B	1	GASKET REC IMAGE EXT 441
10	81110A	1	NUT.HEX.ELASTIC LOCK.10-2
11	920797	2	NUT DRAIN VALVE LOCK #813
12	66933A	1	RETAINER.HOSE.PNTD.1700 I
14	53629A	1	ELBOW.DRAIN ADAPTOR. 1700
15	85395A	2	SCREW.1/4-20 X 1/2 PAN HD
16	82100A	1	LOCKNUT 1/2in CONDUIT
17	87612A	1	SEAL.WASHER.1700 BT II
18	14092A	1	KIT. FLOAT SWITCH(VISION
19	85519A	1	SCR 1/4 -20X 3/8 PN*SY
20	39323A	1	TUBE. RECOVERY (VISION 17
NI	51828A	2	STRAP HOSE 5.00 LEADERS

Support tank 17B

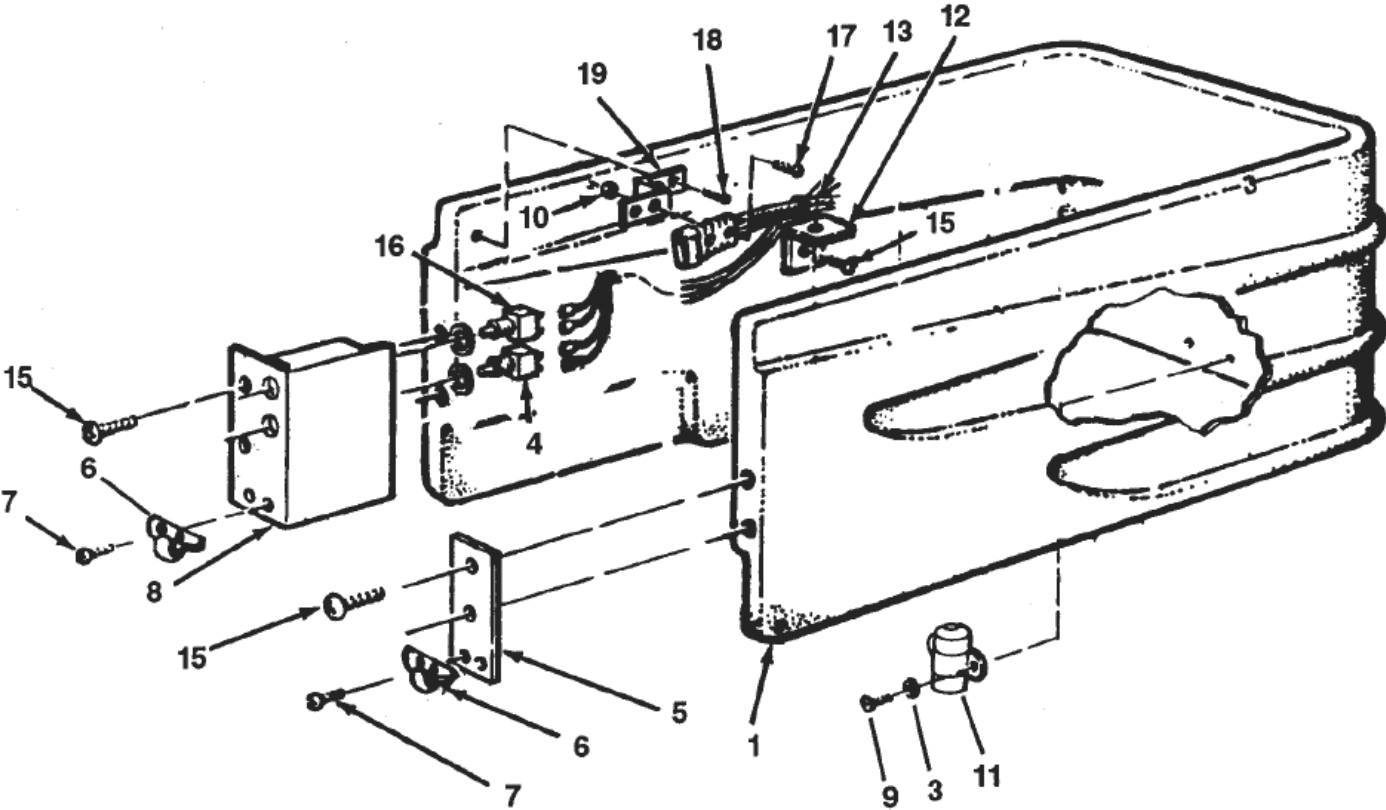
VISION 17B & 17BT

02-12-2014

Part List ID
VISION17B26

32

CLARKE TECHNOLOGY
Vision 17B
Support Tank Assembly
Drawing & Parts List 11/98
Form #18909B



Support tank 17B

VISION 17B & 17BT

02-12-2014

Part List ID
VISION17B26

33

Pos	Part no.	Qty	Description
1	38952B	1	SUPPORT SOLUTION TANK VISION
3	87026A	4	WASHER. .250. FLAT. SS
4	41446B	1	BREAKERCIRCUIT30AQD.25 STR
6	608537	2	STRIKE-HOUSING CLAMP
7	85509A	4	SCREW. 6-32 X 1/4 PAN HEA
8	66688A	1	PLATECIRCUIT BREAKER PNTD
10	920056	2	NUT-6X32 ELASTIC STOP
11	878514	2	TB18 SOLENOID RBM 24V
12	61244A	5	BRKT..TANK.(PAINTED) 1700
13	49728A	1	HARNESS WIRING VISION 17B RI
15	85395A	9	SCREW. 1/4-20 X 1/2 PAN HD
16	41428B	1	BREAKERCIRCUIT35AQD.25 STR
17	962212	2	SCR 6-32X &7/8 PN*ST
18	85518A	1	SCR 1/4 -20X 3/4 PN*SY
19	61246A	1	BRACKET.BAT PLUG.VIS 17/2

Support tank 17BT

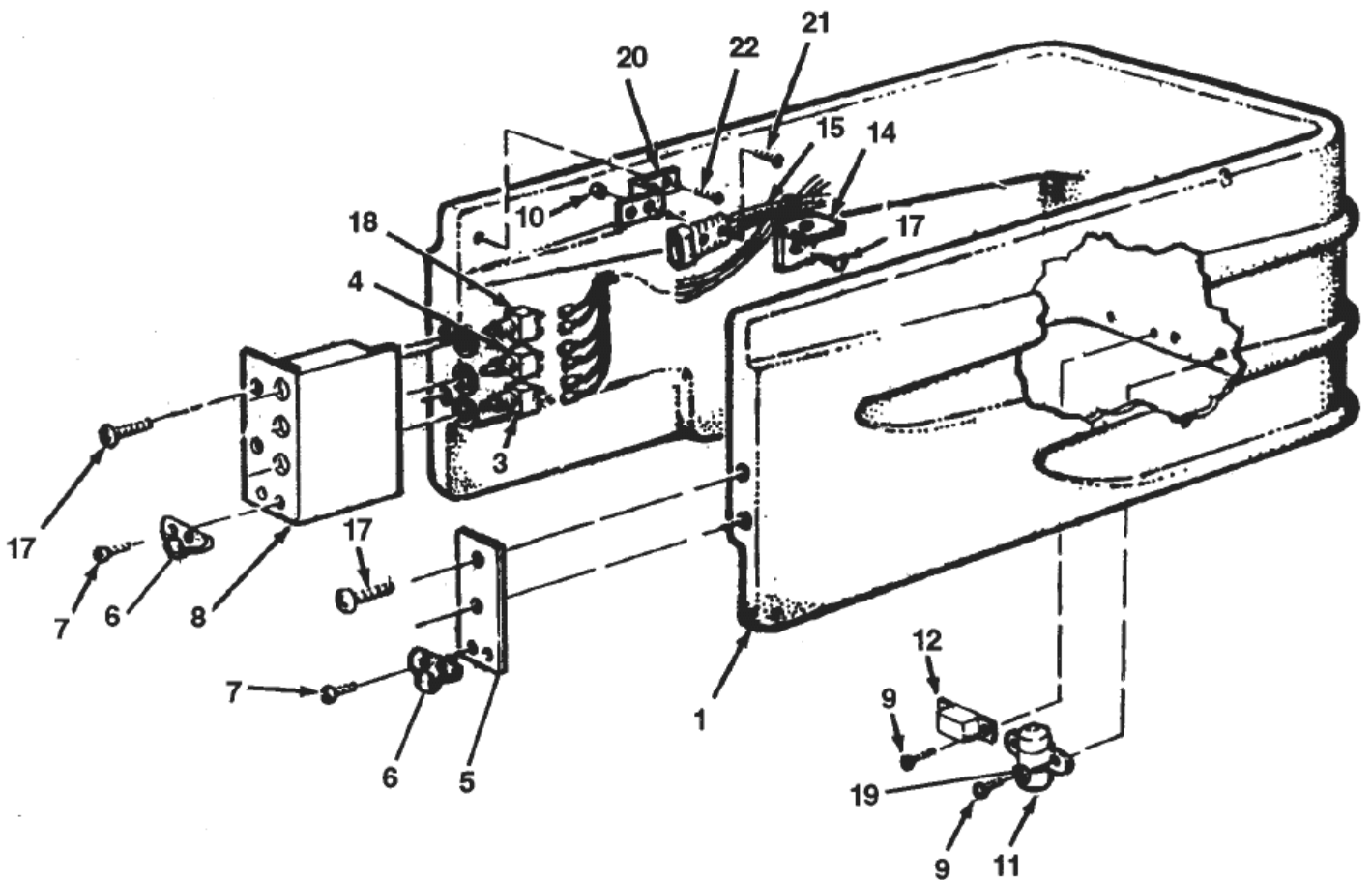
VISION 17B & 17BT

02-12-2014

Part List ID
VISION17B28

34

CLARKE TECHNOLOGY
Vision 17BT
Support Tank Assembly
Drawing & Parts List 11/98
Form #18915B



Support tank 17BT

VISION 17B & 17BT

02-12-2014

Part List ID
VISION17B2B

35

Pos	Part no.	Qty	Description
1	38952B	1	SUPPORT SOLUTION TANK VISION
3	41438B	1	BREAKER,CIRCUIT
4	41446B	1	BREAKERCIRCUIT30AQD.25 STR
6	608537	2	STRIKE-HOUSING CLAMP
7	85509A	4	SCREW. 6-32 X 1/4 PAN HEA
8	66688A	1	PLATECIRCUIT BREAKER PNTD
10	920056	2	NUT-6X32 ELASTIC STOP
11	878514	3	TB18 SOLENOID RBM 24V
12	46312A	1	RELAY.TIME DELAY.24 VDC S
14	61244A	5	BRKT..TANK.(PAINTED) 1700
17	85395A	9	SCREW.1/4-20 X 1/2 PAN HD
18	41428B	1	BREAKERCIRCUIT35AQD.25 STR
19	87026A	6	WASHER. .250. FLAT. SS
20	61246A	1	BRACKET.BAT PLUG.VIS 17/2
21	962212	2	SCR 6-32X &7/8 PN*ST
22	85518A	1	SCR 1/4 -20X 3/4 PN*SY

Brake kit 17BT

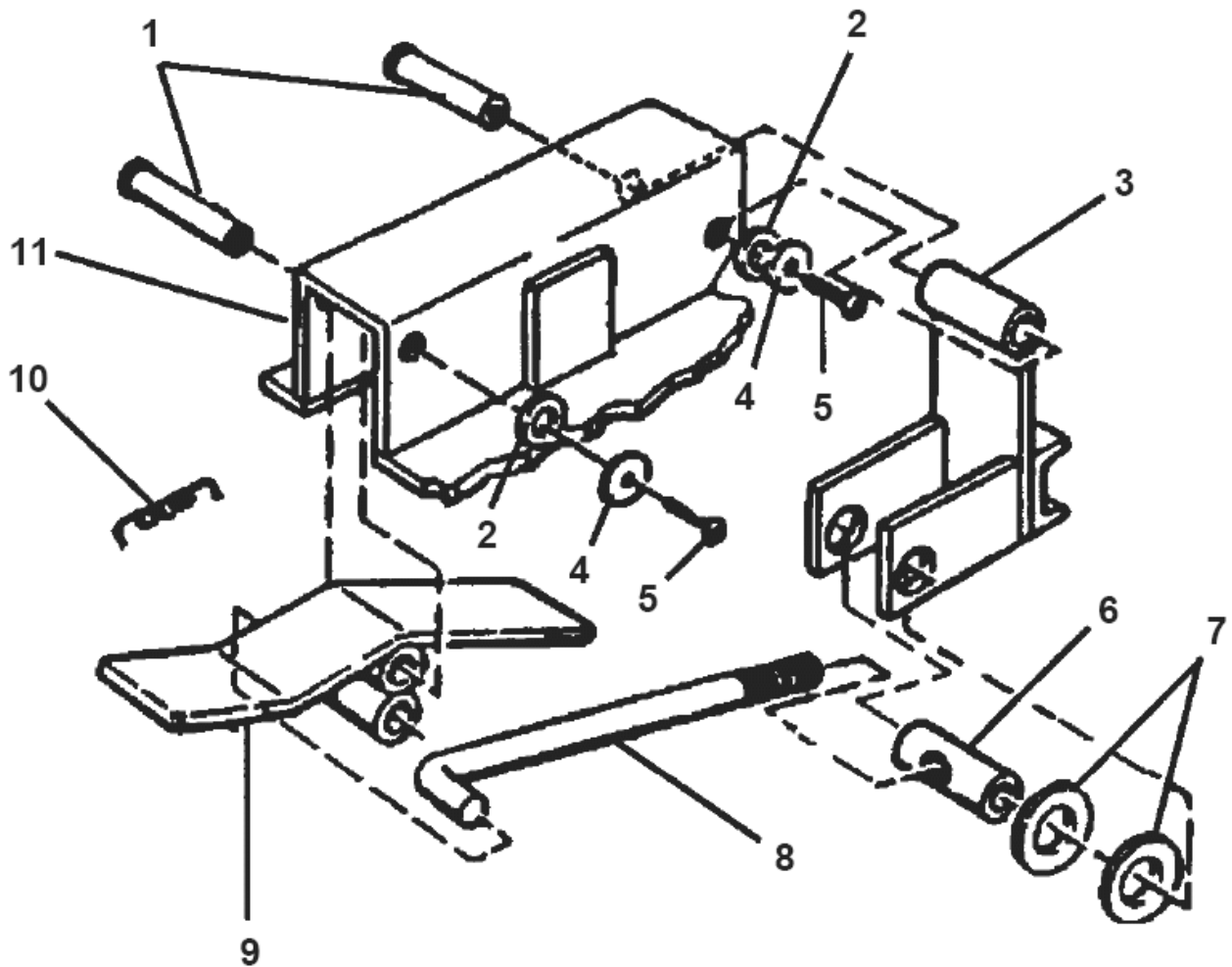
VISION 17B & 17BT

02-12-2014

Part List ID
VISION17B30

36

CLARKE TECHNOLOGY
Vision 17BT
Brake Kit #10773A
Drawing & Parts List 5/98



Brake kit 17BT

VISION 17B & 17BT

02-12-2014

Part List ID
VISION17B30

37

Pos	Part no.	Qty	Description
1	66536A	2	PIN PIVOT BRAKE 1700/2000 (TOY)
2	87027A	2	WASHER.2000 PV
3	17519A	1	PAD WLDMT BRAKE (17BT TOY OTA)
4	87036A	2	WASHER. FLAT. #10 S.S.
5	85397A	2	SCREW.10-24 X 3/8 PAN HD
6	67422A	1	SHAFT-PARKING BRAKE
7	87613A	2	WASHER.NYLON.2000BT II
9	10735A	1	LEVER WELDMENT LEVER(17BT TOY)
10	608340	1	SPRING-LATCH 577/577C/579

Vacuum motor

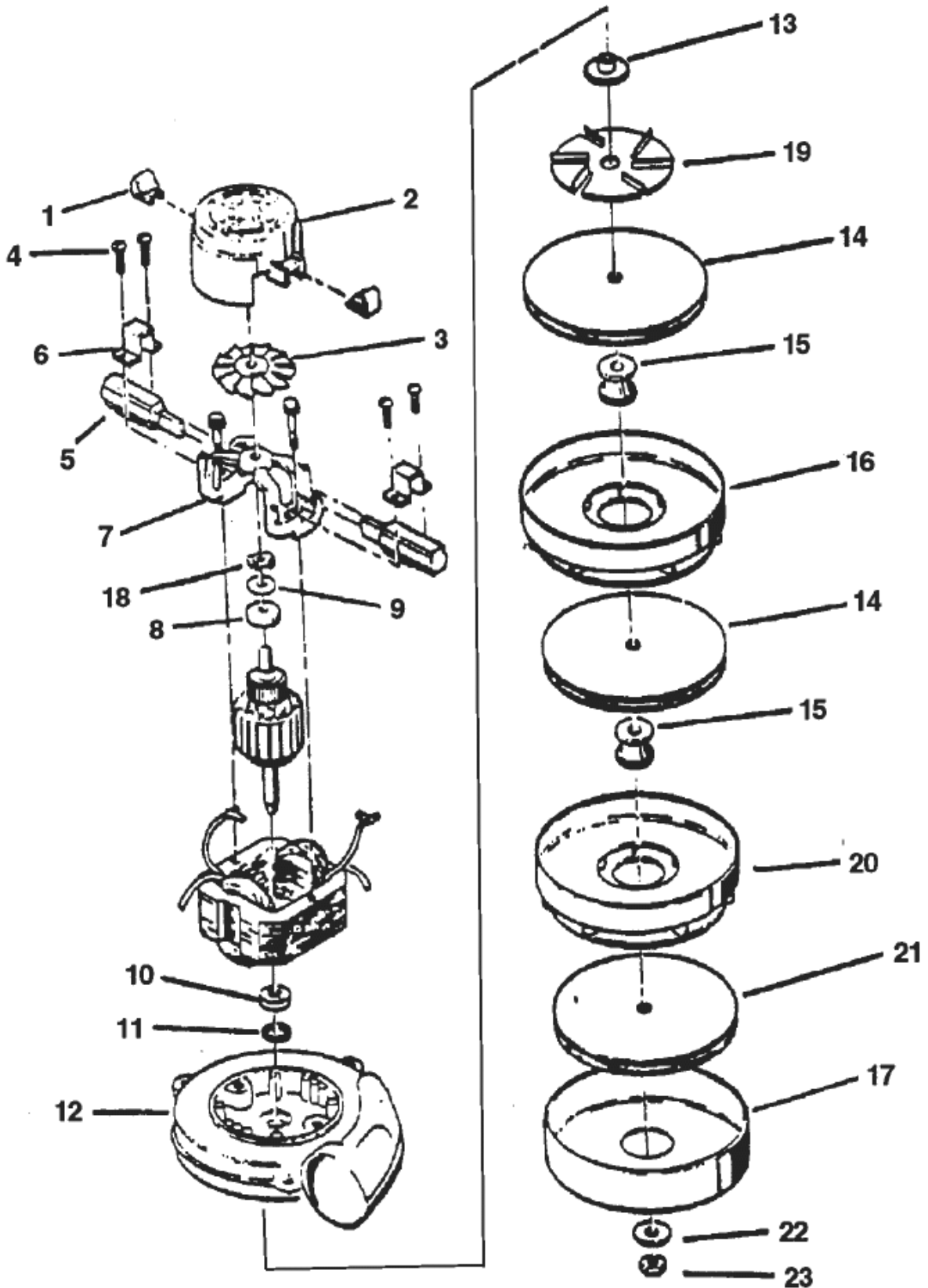
VISION 17B & 17BT

02-12-2014

Part List ID
VISION17B32

38

CLARKETECHNOLOGY
Vision 17B/BT
Vacuum Motor
Drawing & Parts List 11/93
Form #44917A



Vacuum motor

VISION 17B & 17BT

02-12-2014

Part List ID
VISION17B32

39

Pos	Part no.	Qty	Description
1	51913A	2	CLIP
2	54809A	1	HOUSING
4	85303A	4	SCR 8-32X 3/8 PN*ST MA
5	40817A	2	BRUSH.CARBON 2000B VAC MO
6	51914A	2	CLAMP
7	50618A	1	BRACKET-END COMM.
11	59803A	1	WASHER-NEOPRENE (685202-4
14	53914A	2	FAN
15	658201	2	SPACER

NOTE: Pos. no's.: 3, 8, 10, 12, 16, 17, 19, 20, 21, 22 & 23
are not available at this time.

Gear box

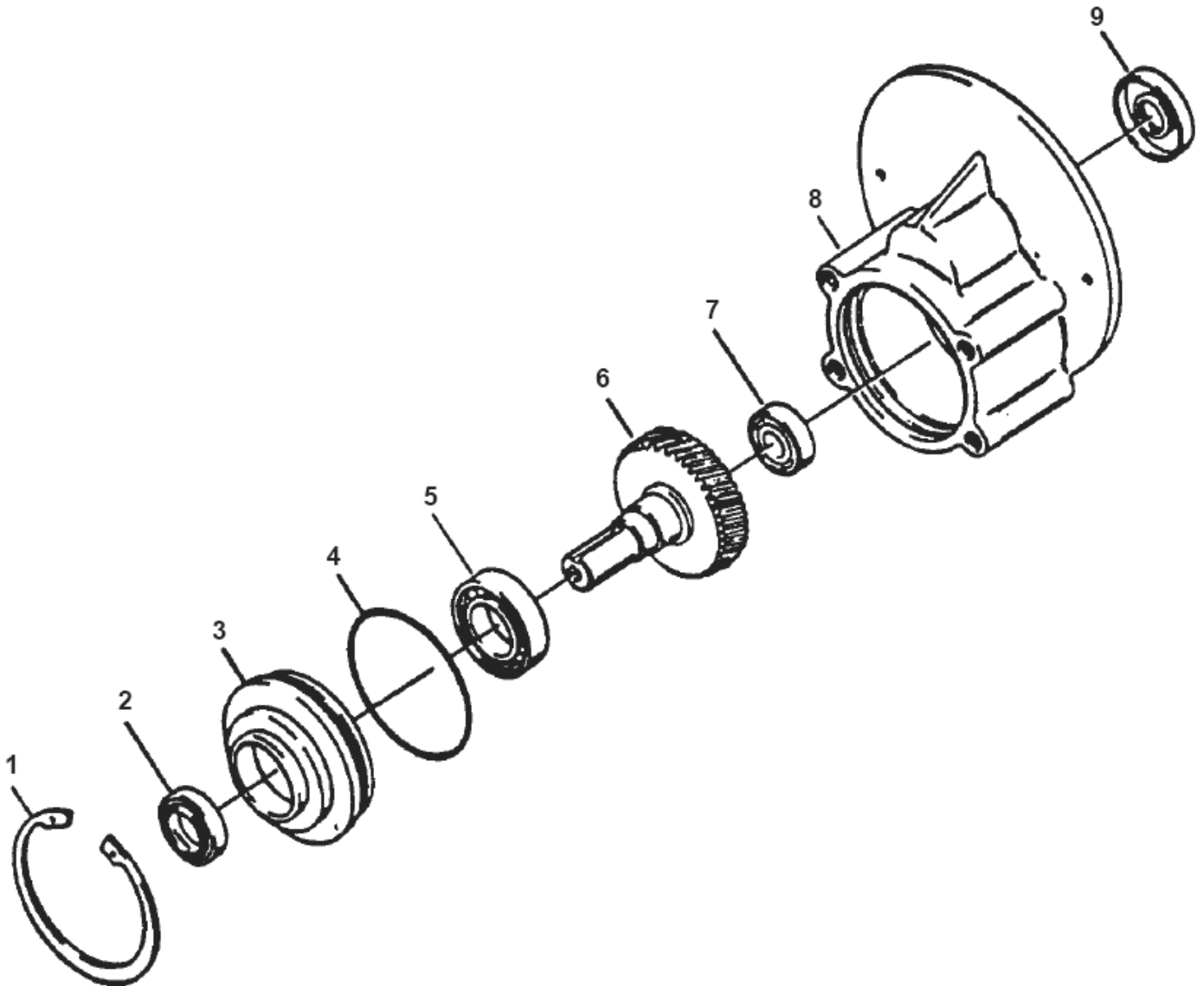
VISION 17B & 17BT

02-12-2014

Part List ID
VISION17B34

40

CLARKTECHNOLOGY
Vision 17B/BT
Gear Box #54238A
Drawing & Parts List 6/94



Gear box

VISION 17B & 17BT

02-12-2014

Part List ID
VISION17B34

41

Pos	Part no.	Qty	Description
1	57846A	1	RING KIT.SNAP.INTERNAL.GE
2	507641	1	SEAL.OIL-0.875 X 1.375 X
3	52050A	1	CAP. END. GEAR BOX 1700/2
4	56668A	1	O-RING. GEARBOX. (1700/20
5	51176A	1	BEARING. BALL 6005 SERIES
6	58316A	1	SHAFT AND GEAR. GEARBOX 1
7	902605	1	BRG 710 730 TB16 TB18
8	54883A	1	HOUSING. GEARBOX. 1700/20
9	58144A	1	SEAL. OIL 1.628 OD X .75

Vision 17B/17BT

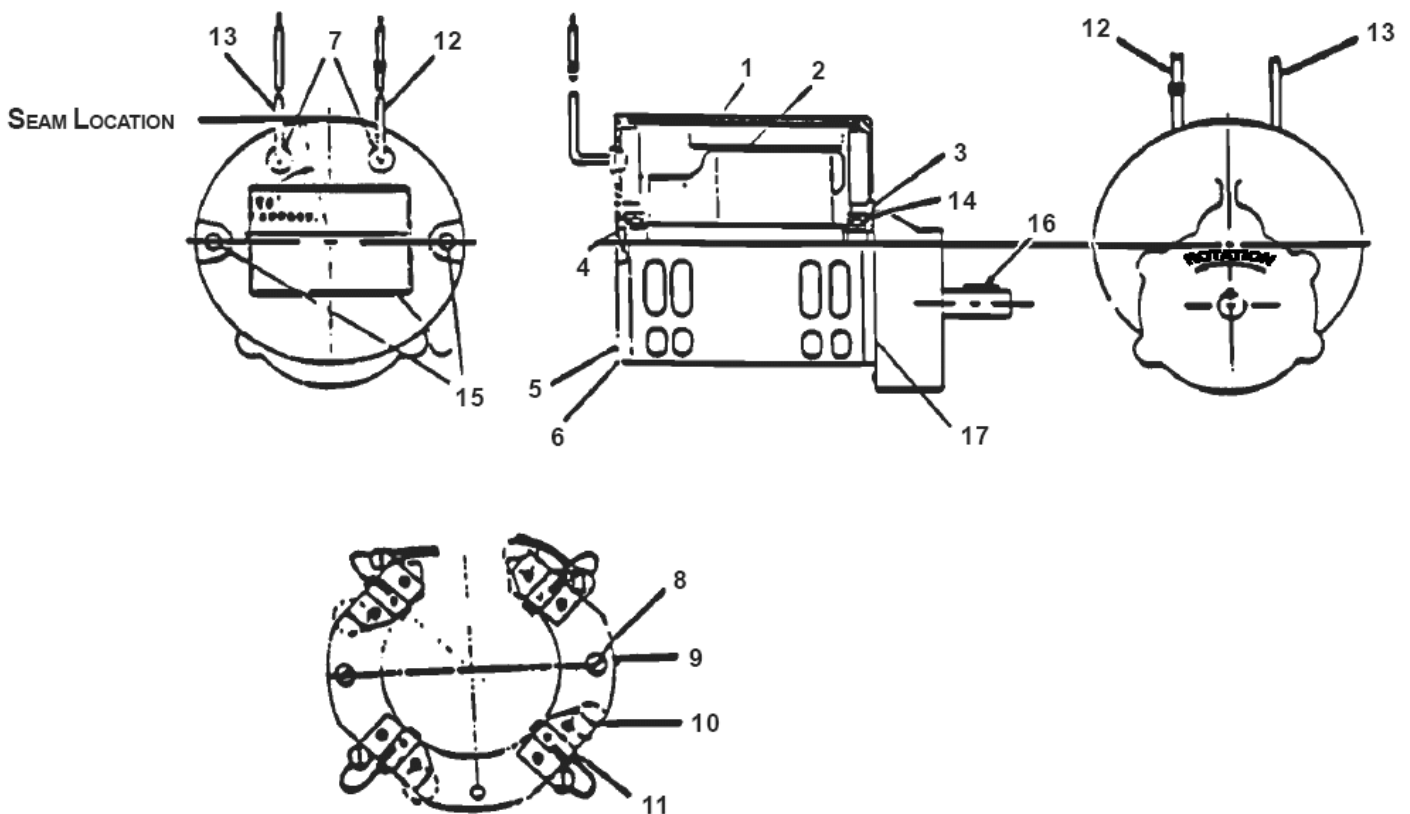
VISION 17B & 17BT

02-12-2014

Part List ID
VISION17B36

42

CLARKTECHNOLOGY
Vision 17B/BT
Drawing & Parts List 3/95
Form#10503A



Vision 17B/17BT

VISION 17B & 17BT

02-12-2014

Part List ID
VISION17B36

43

Pos	Part no.	Qty	Description
1	56478A	1	STATOR ASM
2	50142A	1	ARMATURE. ASM. 1700/2000
3	902654	1	BEARING
4	902550	1	BEARING
5	51840A	1	COMMUTATOR ASM. BRACKET 1700/
6	50520A	1	BRACKET COMMUTATOR 1700/2000
7	56480A	2	STRAIN RELIEF MOTOR 1700/2000
8	962546	2	SCR 10-24X 1/2 PN*ST TY
9	50517A	1	BOARD. ASM. BRUSH 1700/20
10	448396	4	SPRING-BRUSH #571001
11	40826A	4	BRUSH ASM.CARBON (V32I/26
12	55657A	1	LEAD ASM POSTIVE FOR MTR NO.44
13	55656A	1	LEAD ASM NEGATIVE FOR MTR NO.4
14	59805A	1	WASHER-HELICAL
15	50515A	2	BOLTTHRU 1/4-20 X 7 5/8 HEX H
16	44809b	1	GEARMOTOR, 200 RPM,24V, 1
17	54238A	1	GEARBOX ASSEMBLY 1700/200

Traverse motor 17BT

VISION 17B & 17BT

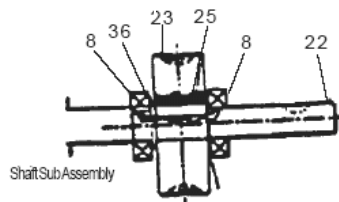
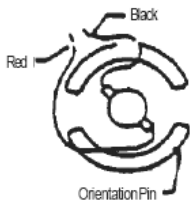
02-12-2014

Part List ID
VISION17B38

44

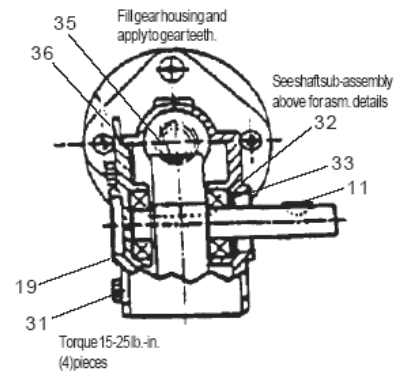
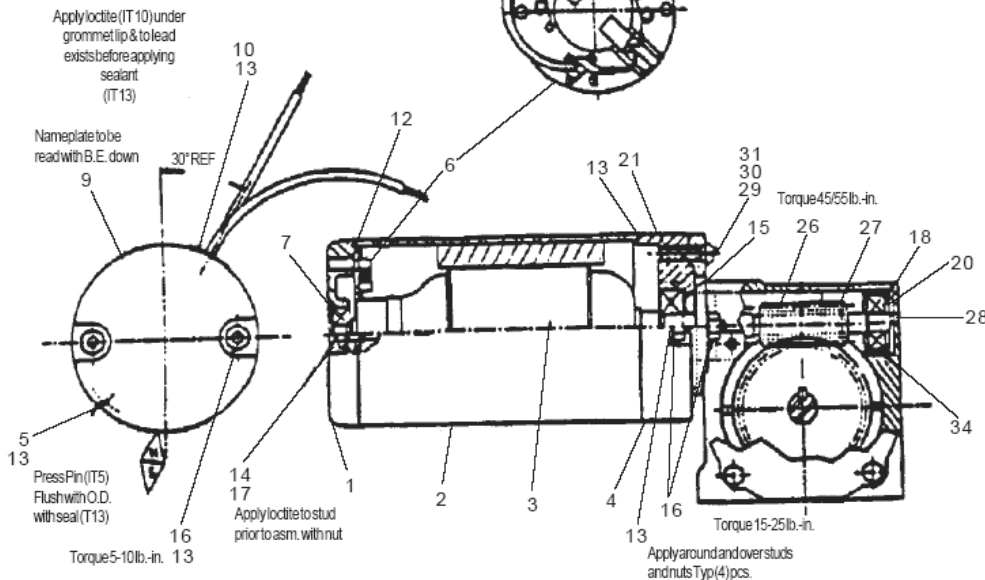
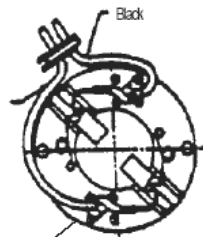
CLARKTECHNOLOGY Vision 17BT Traverse Motor Drawing & Parts List 2/96 Motor#45031A

View from plainer.
schematic



Shaft Sub Assembly Instructions

1. Assemble the retaining ring (24) to the output shaft (22) centering the middle tab of the "E" ring in the keyway. The center tab should bottom in the keyway.
2. Assemble the key (25) to the output shaft (22) butting the key against the center tab of the retaining ring (24). Dimensions over the key and shaft is .381.
3. Assemble gear (23). The gear should be started by hand over the shaft and key to assure proper alignment and butt against the retaining ring (24).
4. Assemble spacer (36).
5. Assemble the bearing (8) onto the shaft with the seal to the inside. Press only on the inner race until the bearings are butted securely against the gear spacer on one side and against the "E" ring on the other side.



Traverse motor 17BT

VISION 17B & 17BT

02-12-2014

Part List ID
VISION17B3B

45

Pos	Part no.	Qty	Description
7	902679	1	BEARING-BALL
15	53319A	1	WIRE ASM. D14 D18
27	925597	1	PIN-3/32 DIA X 3/4 ROLL S
29	962892	1	SCR 1/4 -20X 3/4 PN ST
30	980614	1	WASHER LK 1/4 EXT TOOTHPLTD
33	59868A	1	WASHER MOTOR FOR 45031A

Traverse motor 17B

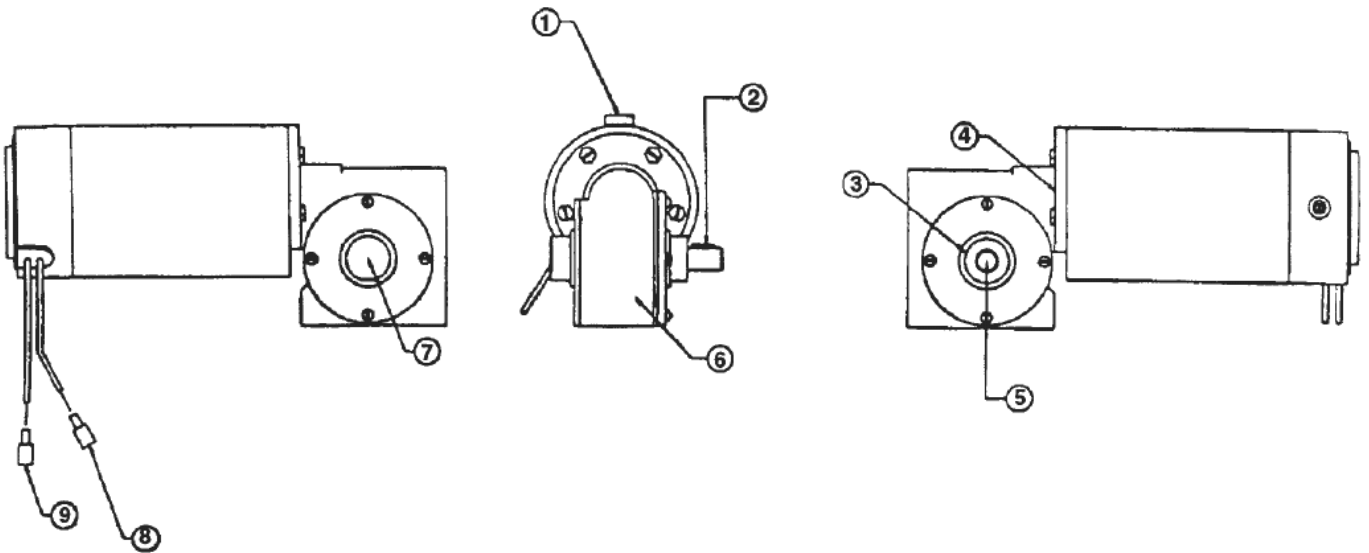
VISION 17B & 17BT

02-12-2014

Part List ID
VISION17B40

46

CLARKE TECHNOLOGY
Vision 17BT
Traverse Motor 24V
Drawing & Parts List 2/96
Form #45031C



Traverse motor 17B

VISION 17B & 17BT

02-12-2014

Part List ID
VISION17B40

47

Pos	Part no.	Qty	Description
1	40831A	2	BRUSH CARBON (FOR 45031B) 2 EA
5	54416A	1	GEAR ASM. FOR 45031C
8	47905A	1	TERM. .25 FI MQC 14/16G
9	47905A	1	TERM. .25 FI MQC 14/16G

Battery charger

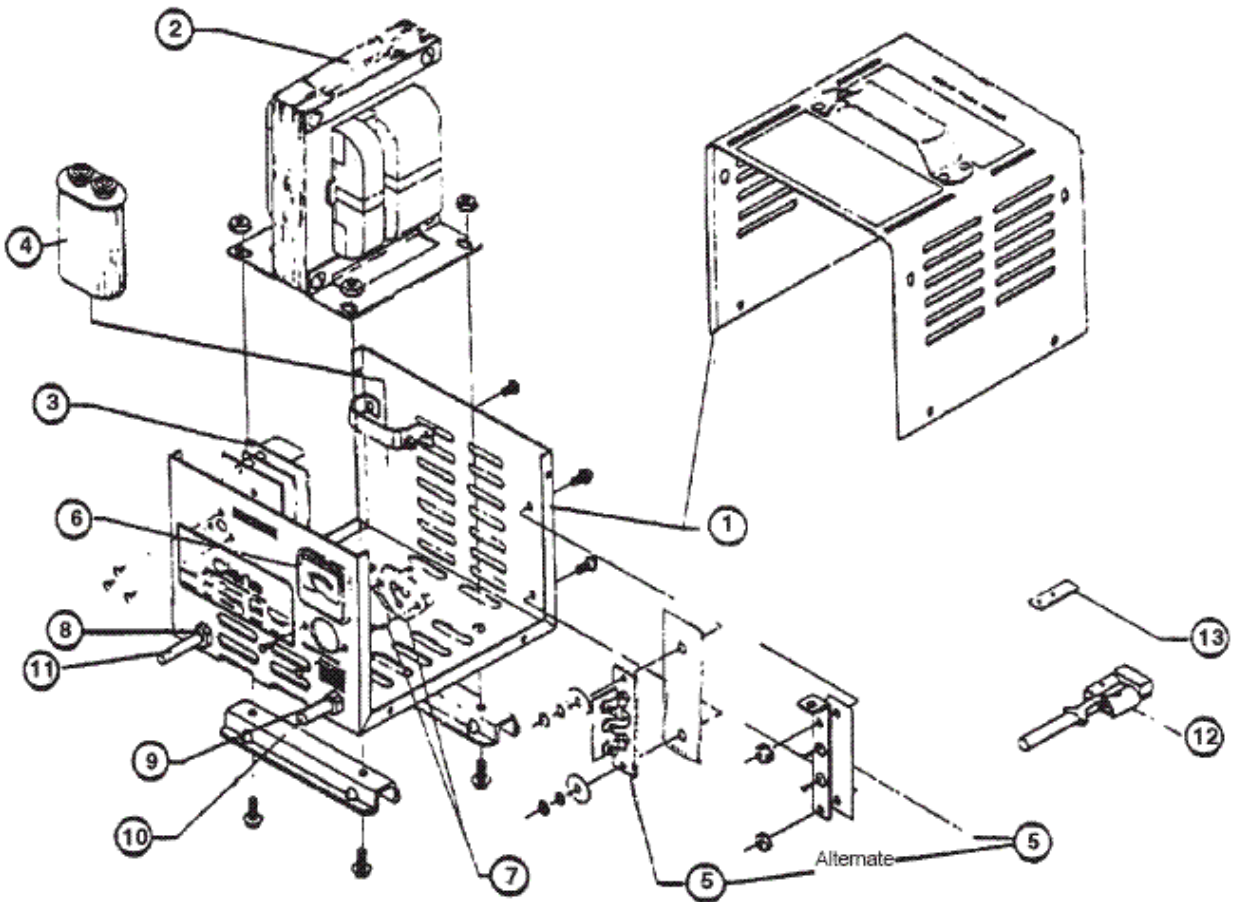
VISION 17B & 17BT

02-12-2014

Part List ID
VISION17B41

48

CLARKTECHNOLOGY Vision 17B/BT Battery Charger Drawing & Parts List 11/93



Battery charger

VISION 17B & 17BT

02-12-2014

Part List ID
VISION17B41

49

Pos	Part no.	Qty	Description	
3	48200A	1	Timer Electronic (Smart)	FOR CHARGER 40511A
6	40206A	1	AMMETER-15 AMP	
7	283360	1	FUSEHOLDER	
7	912216	1	FUSE (AGC-15)	
11	908982	1	CORD ASSEM.AC 115V/60HZ	FOR CHARGER 40510A
12	911470	1	HOUSING.CONNECTOR.RED. (2	
13	795020	1	KEY CHARGER PLUG SPS-28	