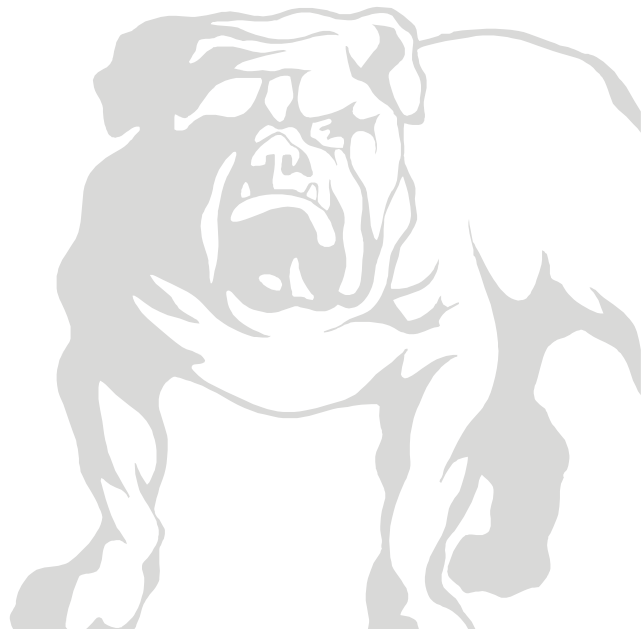


PS 1437

Service instructions v0314



Index.	Page.
Index	2
Tool parts <u>produced after 10/2013</u> , from serial no: 201310 17823	3
Parts list <u>after 10/2013</u> , from serial no: 201310 17823	4
Tool parts <u>produced before 09/2013</u> , until serial no: 201308 17822	5
Parts list <u>before 09/2013</u> , until serial no: 201308 17822	6

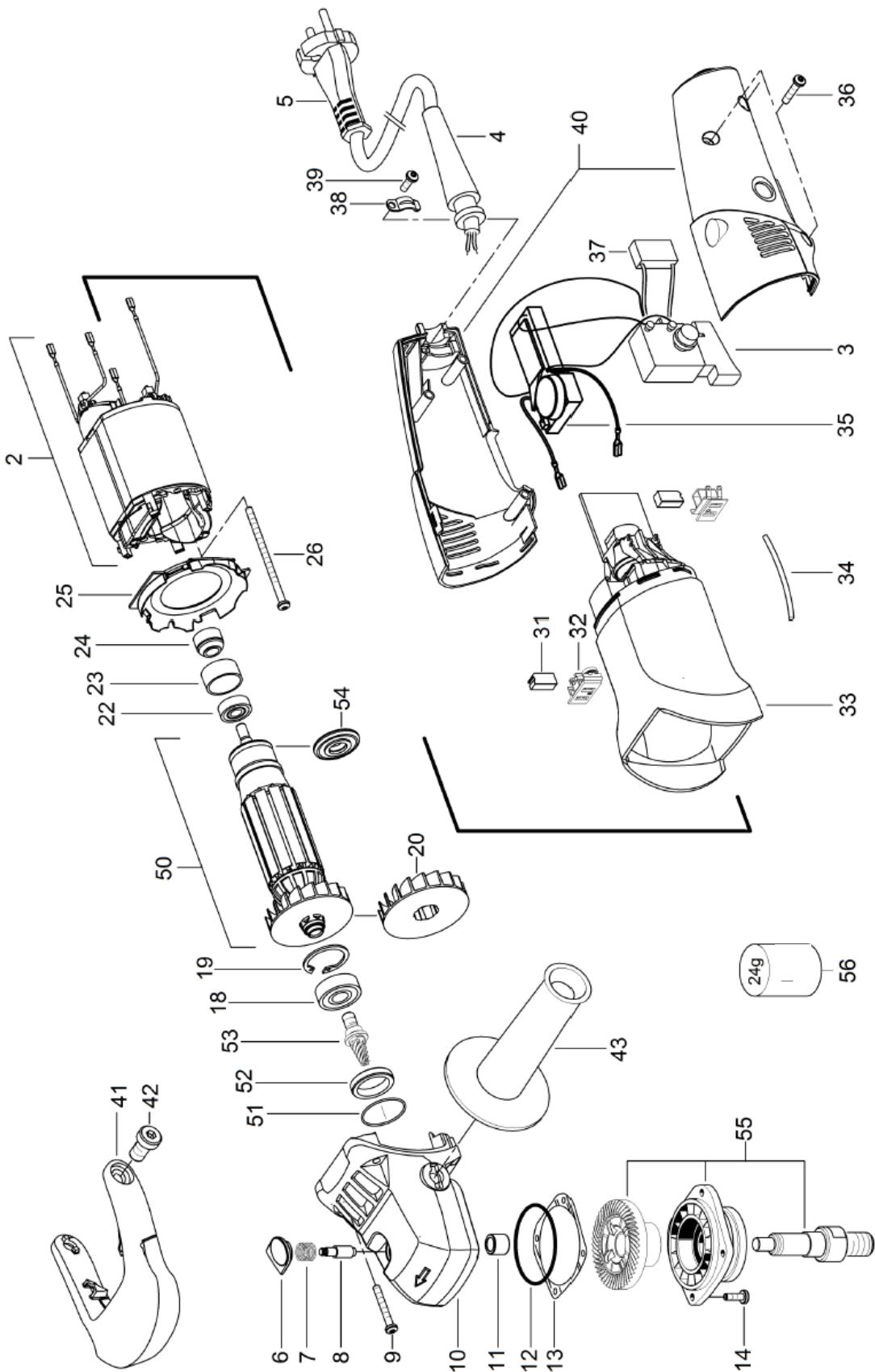
Instructions.

Replacing the armature (50) in tool from serial no: 201310 17823	7-9
Replacing the armature (1) in tool up to serial no: 201310 17822	10
Identification by serial number and type	11

Exploded view for Polisher PS1437

Updated 11.12.2013

For tools produced after 10/2013, from serial no: 201310 17823



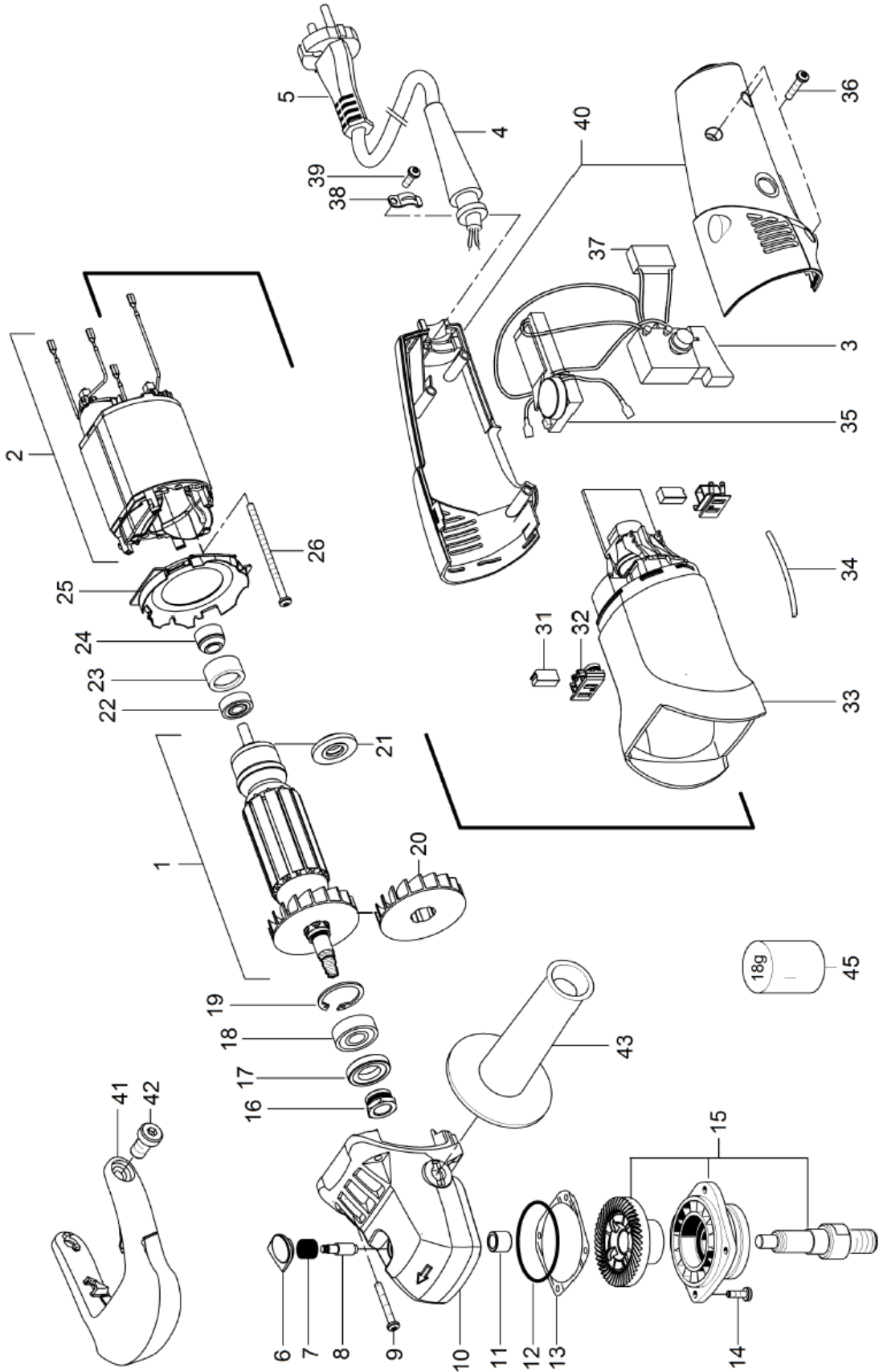
Parts list

Spare parts for PS1437 produced from 10/2013, from serial no: 201310 17823		
Pos.	Code	Description
2	8991302111	Field
3	8991303111	Switch
4	8991304111	Strain relief
5	8991305111	Cable comp
6	8991306111	Locking Button
7	8991307111	Spring
8	8991308111	Locking Pin
9	8991309111	Screw
10	8991310111	Gear Housing
11	8991311111	Needle Bearing
12	8991312111	O-ring
13	8991313111	Distance ring
14	8991314111	Screw
18	8991318111	Ball Bearing
19	8991319111	Spring ring
20	8991320111	Cooling Fan
22	8991322111	Ball Bearing
23	8991323111	Rubber Sleeve
24	8991324111	Magnet Impulse ring
25	8991325111	Air Directing Ring
26	8991326111	Screw
31	8991331211	Cut Off Brush Kit (2 pcs)
32	8991332111	Brush Holder
33	8991333111	Motor Housing
34	8991334111	Protection Tube
35	8991335111	Electronic
36	8991336111	Screw
37	8991337111	Interference Filter
38	8991338111	Strain Relief Clamp
39	8991339111	Screw
40	8991340111	Rear Handle Kit
41	8991341111	Bail Grip
42	8991342111	Screw
43	8991343111	Side Handle
44	8991344111	Allen Key SW5
45	8991345111	Grease
50	8991350111	Armature
51	8991351111	Sleeve
52	8991352111	Distance Ring
53	8991353111	Pinion
54	8991354111	Seal
55	8991355111	Drive Shaft Comp
56	8991356111	Grease 24 g

Exploded view for Polisher PS1437

Updated 11.12.2013

For tools produced before 09/2013, until serial no: 201308 17822



Parts list

Spare parts for PS1437 produced before 09/2013, until serial no: 201308 17822		
Pos.	Code	Description
1	8991301111	Armature
2	8991302111	Field
3	8991303111	Switch
4	8991304111	Strain relief
5	8991305111	Cable comp
6	8991306111	Locking Button
7	8991307111	Spring
8	8991308111	Locking Pin
9	8991309111	Screw
10	8991310111	Gear Housing
11	8991311111	Needle Bearing
12	8991312111	O-ring
13	8991313111	Distance ring
14	8991314111	Screw
15	8991315111	Drive Shaft Comp
16	8991316111	Sleeve
17	8991317111	Seal
18	8991318111	Ball Bearing
19	8991319111	Spring ring
20	8991320111	Cooling Fan
21	8991321111	Rubber Seal
22	8991322111	Ball Bearing
23	8991323111	Rubber Sleeve
24	8991324111	Magnet Impulse ring
25	8991325111	Air Directing Ring
26	8991326111	Screw
31	8991331211	Cut Off Brush Kit (2 pcs)
32	8991332111	Brush Holder
33	8991333111	Motor Housing
34	8991334111	Protection Tube
35	8991335111	Electronic
36	8991336111	Screw
37	8991337111	Interference Filter
38	8991338111	Strain Relief Clamp
39	8991339111	Screw
40	8991340111	Rear Handle Kit
41	8991341111	Bail Grip
42	8991342111	Screw
43	8991343111	Side Handle
44	8991344111	Allen Key SW5
45	8991345111	Grease 18 g

Replacing the armature (50) in tool from serial no: 201310 17823



Open screws (14) and lift off the drive shaft assembly (55)

Open screws (42) and remove the bail grip (41)

Open screws (9) and pull out the gear housing (10)



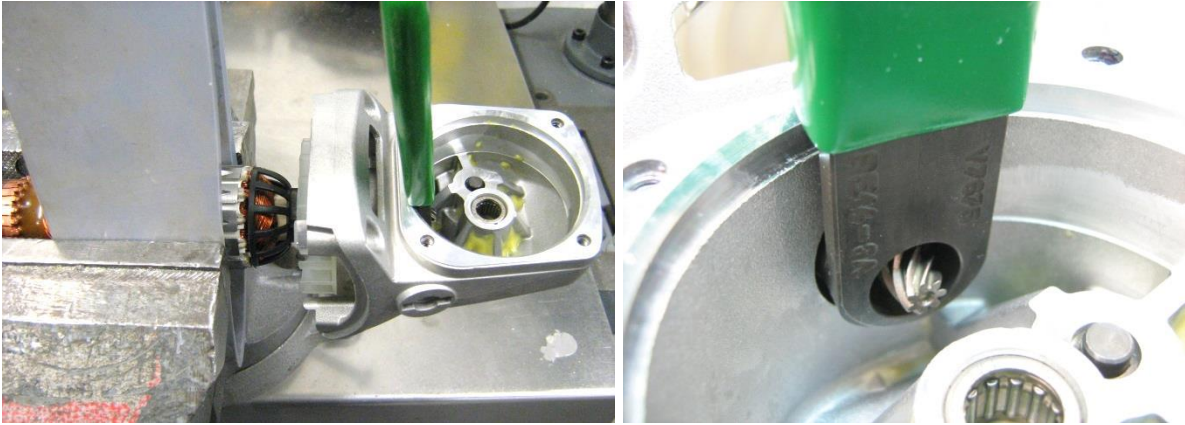
Pinion in the gear housing.

Tool: V7675 PE14-3A

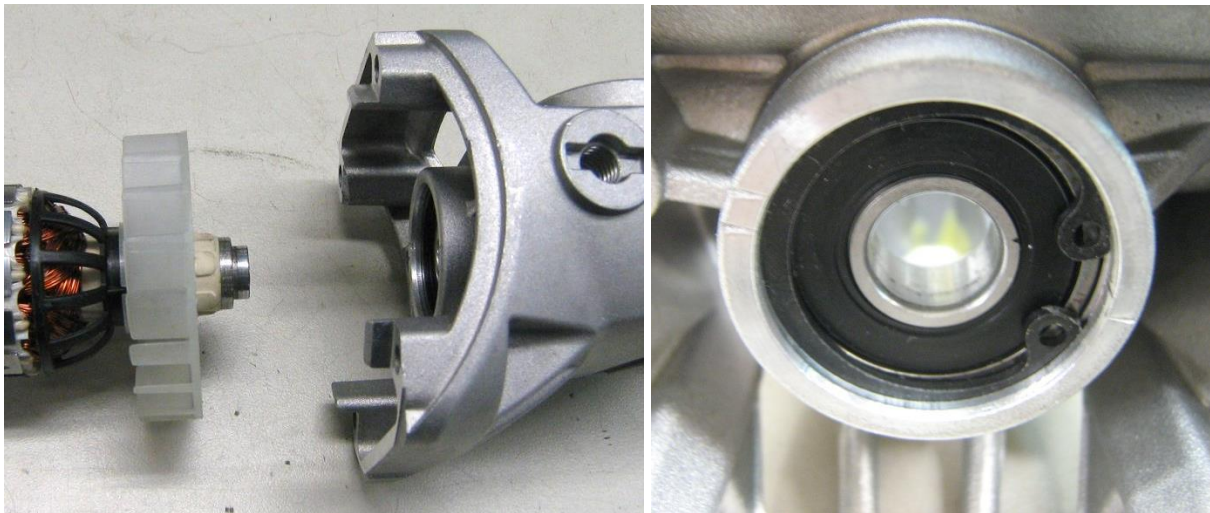
Mirka code: 8995910611



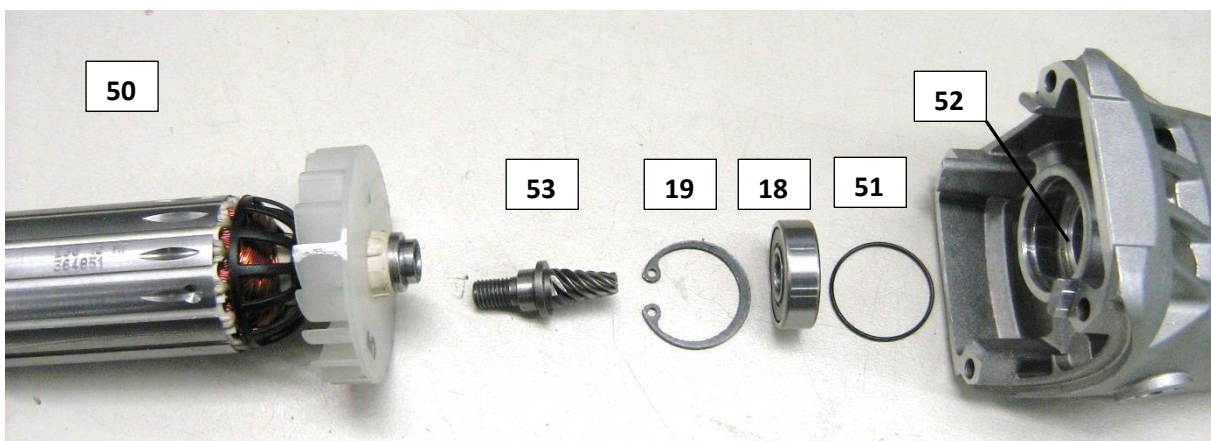
Pinion tool to unscrew the pinion.



Clamp the armature in a vice, protect the armature with a strip of soft material. Attach the pinion tool as shown in the picture, and unscrew the pinion counter clockwise.



With the pinion (53) unscrewed pull the armature (50) out of the bearing. The bearing (18) is locked in the gear housing (10) with a retaining ring (19).

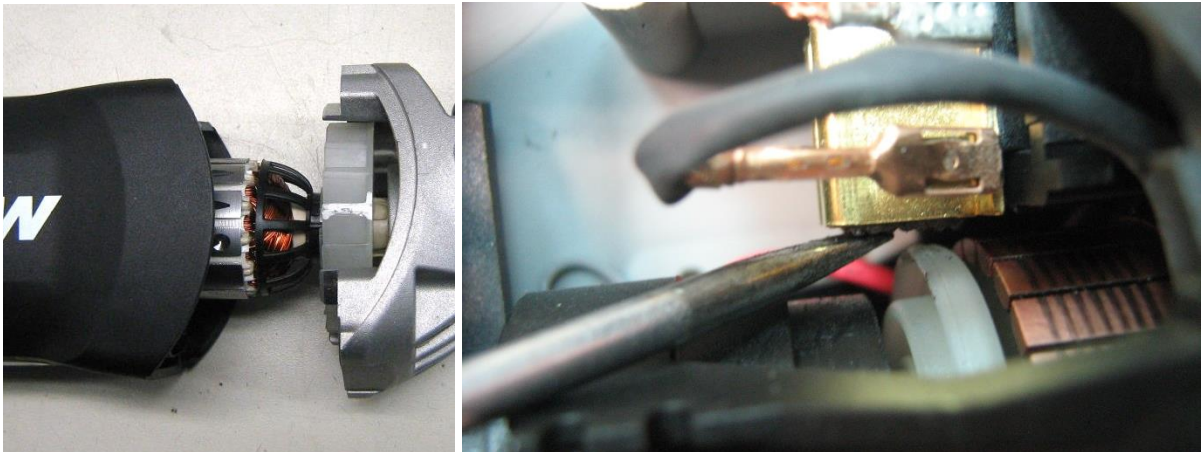


Armature (50), Pinion (53), Retaining ring (19), Bearing (18), Seal (51), Distance ring (52).

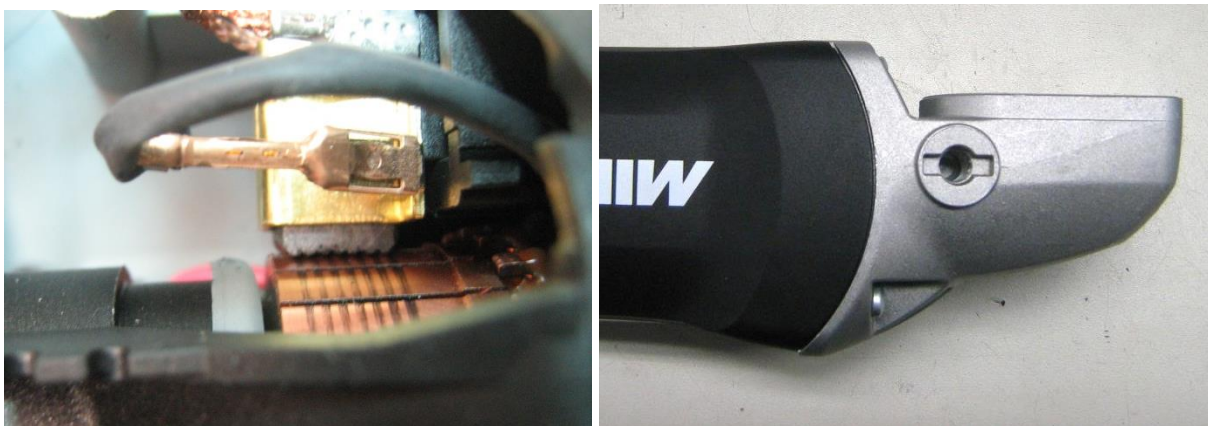
Reassemble the parts in gear housing (10) and fill with new grease (24 g).



Open screws (36) to access the electrical parts.

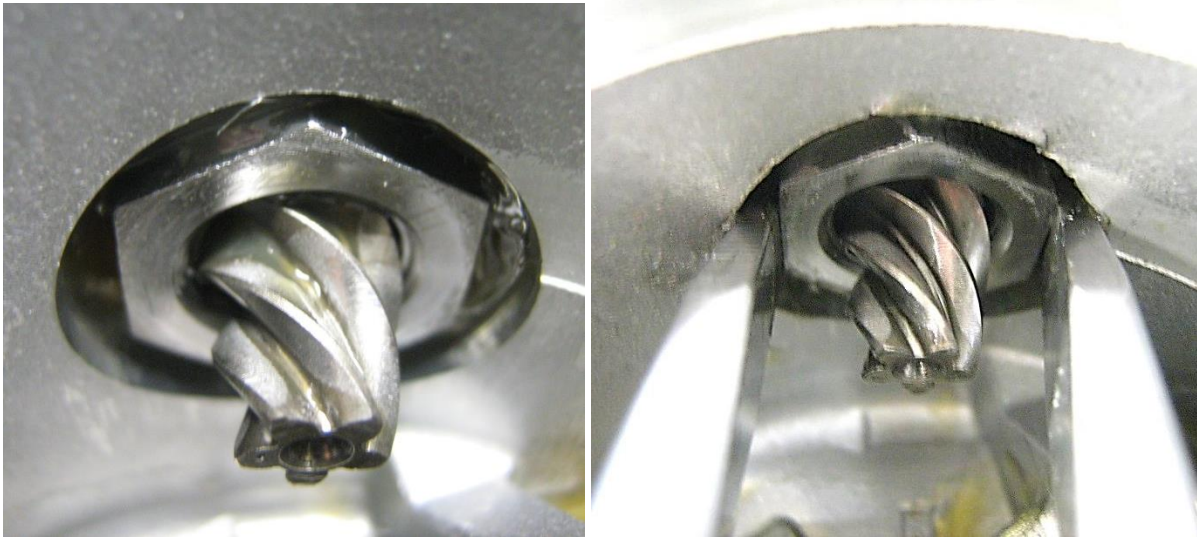


Insert the armature halfway in to the motor housing (33), lift the brushes with a screwdriver to get the collector in correct position.

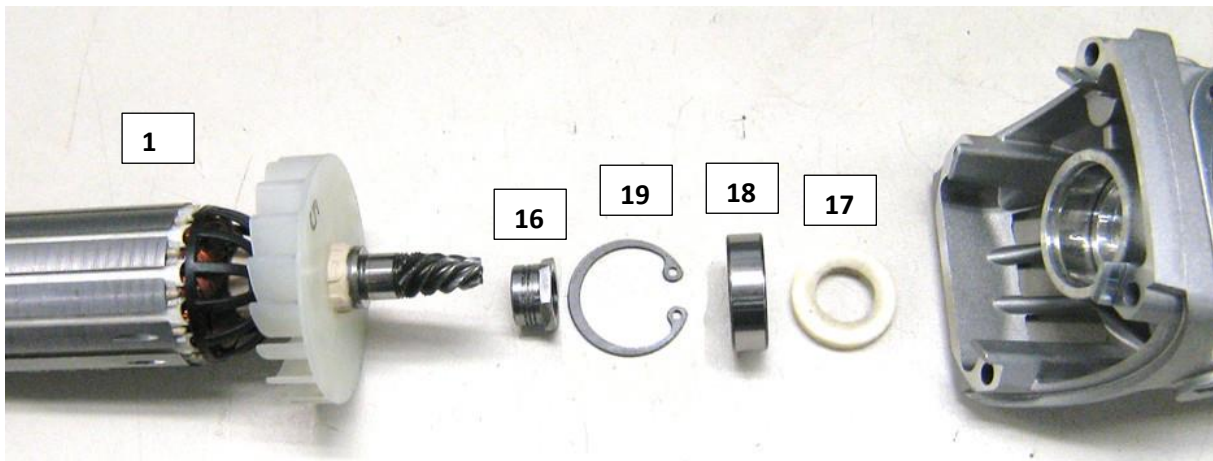


Collector in correct position, carbon brush in contact with the collector. Tighten the gear housing (10) to motor housing (33), and mount the drive shaft assembly (55) to the gear housing (10).

Replacing the armature (1) in tool up to serial no: 201308 17822



Open the gear housing as described on page 7. Clamp the armature in a vice, protect the armature with a strip of soft material. Use two screwdrivers to keep the sleeve (16) against the housing, and turn the housing counter clockwise to unscrew the sleeve.



Armature (1), Sleeve (16), Retaining ring (19), Bearing (18), Seal (17).

Reassemble the parts in gear housing (10) and fill with new grease (18 g).

Assemble the tool as described on page 9.

Identification by serial number and type

Type: **PS 1437**

Mirka type: **8991300111**

Serial number: **11/2013 17963**



Type: **PS 1437**

Mirka type: **8991300111**

Serial number: **07/2012 16700**